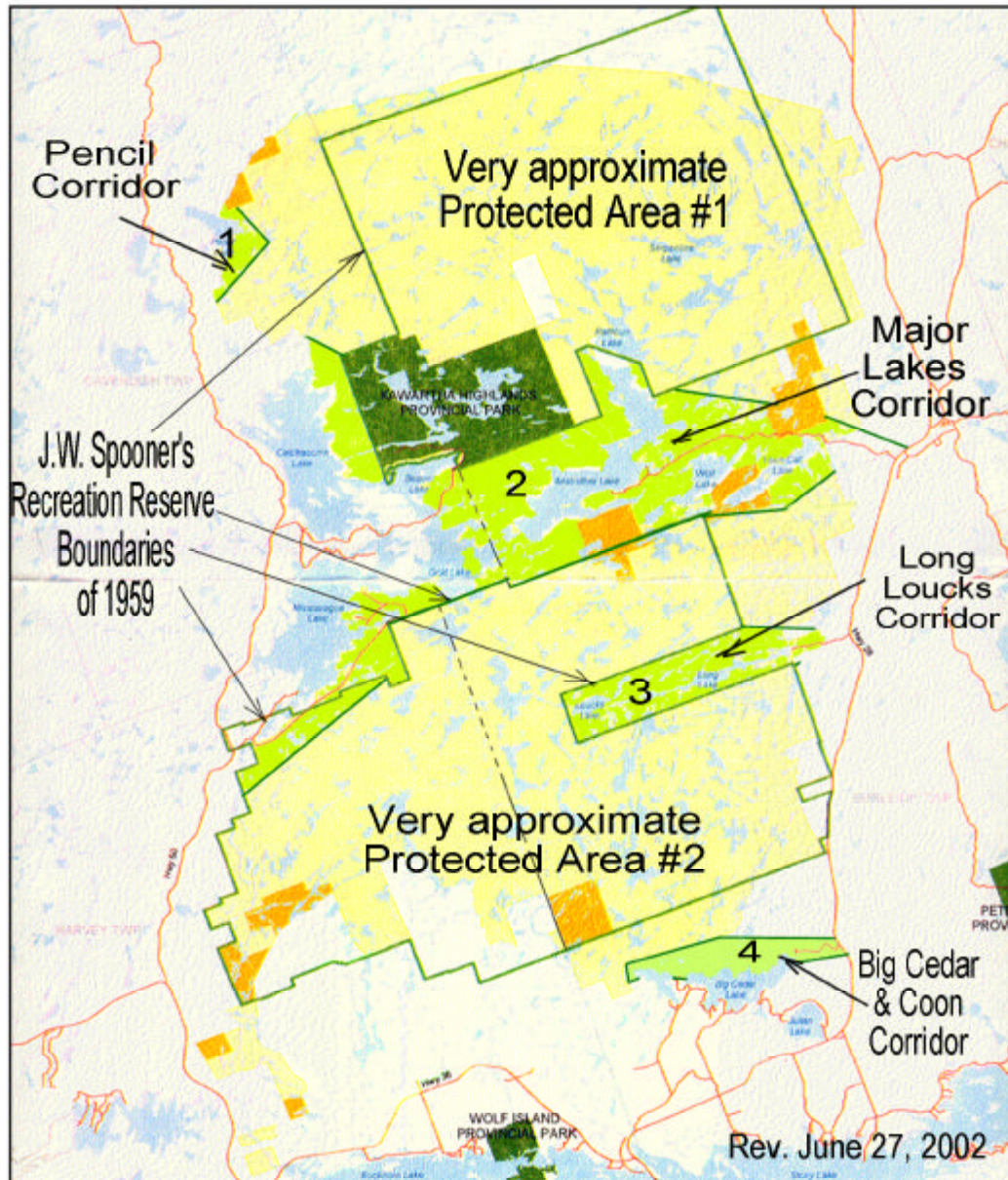


POOKHs' Win-Win-Win Proposal Map #1

Boundaries are very approximate, but private property should not be contiguous at any point with Crown Land designated either Park or CR. Areas shown in light green should be General Use Crown Land (buffer zones) partitioned into MMAs.



A Reasonable Outcome:

Protected Areas PA #1 and PA #2 are called parks, CRs or MMAs (MMAs would be best.) KHPP developed properly. Areas within the KHSS but exterior to the KHPP, PA #1 and PA #2 be designated General Use. These areas, shown in light green, may be divided into Modified Management Areas with rules determined by "Win-Win-Win" philosophies and strategies, AT A VERY LOCAL LEVEL, with input from property owners in the immediate vicinity.

Each MMA should have a committee to which local property owners would be appointed, with others from MNR, the Municipality and possibly fourth parties in certain cases. Representatives from the MMAs, the MNR and the Municipality could participate on "an umbrella" committee which could become the "co-stewardship" committee for the entire KHSS area.