

Friday 19th August 2005

Dear Sir/Madam,

As we approach the next year – 2006 – we would like to showcase two calendars.

This year we present:

- **1. Tigers of Kanha National Park.**

This is a calendar dedicated to the tigers of Kanha. Today tigers are on the brink of extinction and with this calendar we capture the beauty of this magnificent animal. The calendar is accompanied with year planner which allows one to make notes and entries on the relevant dates.

Imagine driving through the meadows of Kanha. Your eyes search the grasses for movement, some hint of that familiar orange and black. For hours there's nothing and then suddenly, in an instant you're within meters of a tiger. Then the big male turns and flicks his tail with such disdain that there's nothing left to do but flop back into the jeep and sigh, in amazement.

- **2. Animals of Kanha National Park.**

This calendar showcases the vast species of animals living in Kanha. Ranging from the hard ground barasingha to the elusive jungle cat. These photographs capture the essence of these animals in their natural habitat.

Located in the state of Madhya Pradesh in Central India, Kanha National Park covers almost 2000sq.km. Pristine Sal forests and vast grasslands define this beautiful park that is home to over 250 species of birds and 30 species of mammals.

We would like to know if you would be interested in ordering these calendars for your company/organization(s)?

Both these calendars have ample amount of space to display your company's name, logo and more detailed information. The company logo and the by-line is displayed below the months, keeping it clearly visible at all times. Please find in the following pages samples of the calendar, pricing and ordering details.

If you have any further queries please do not hesitate to contact us.

We look forward to your response.

Yours Sincerely,

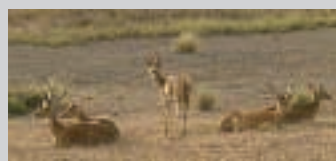
(Narayan Gopalan and Siddharth Rao)
For ByDesign

Calendars for 2006

The Animals of Kanha National Park

Kanha National Park occupies almost 2000 sq km of forested area in Madhya Pradesh, central India. Kanha is home to dwindling numbers of hard-ground Barasingha and the majestic Royal Bengal Tiger. The park is one of the greatest success stories in tiger conservation in India. Pristine Sal forests and vast grasslands define this beautiful park that shelters over 250 species of birds and 30 species of mammals. This calendar is a tribute to the awe-inspiring forests of Kanha.

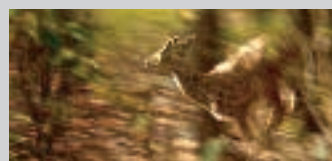
A percentage of the income from this calendar will go to a registered society for forest guides. The work of forest guides is crucial to the preservation of national parks such as Kanha.



January *Barasingha*



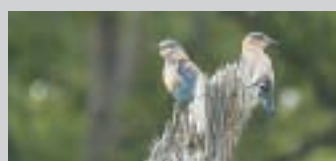
February *Spotted Owlet*



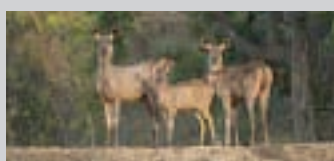
March *Chital*



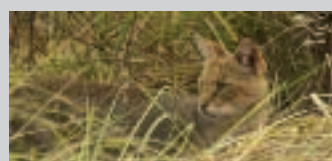
April *Gaur*



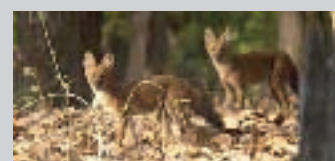
May *Indian Roller*



June *Sambar*



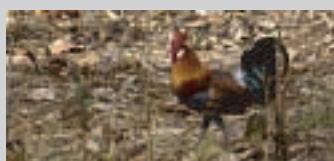
July *Jungle Cat*



August *Wild Dog Pups*



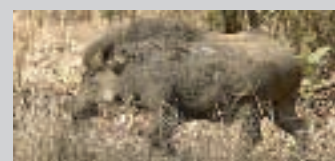
September *Asiatic Jackal*



October *Red jungle Fowl*



November *Royal Bengal Tiger*

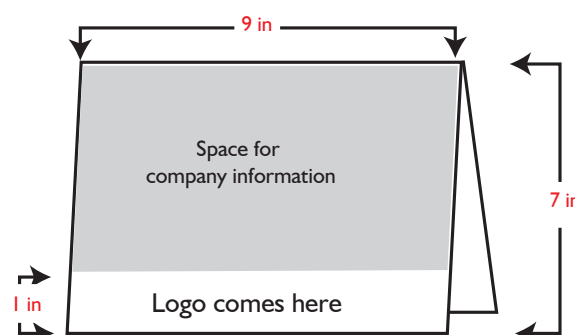


December *Wild Boar*

Stand layout

The area below the image (1 in x 9 in) has been reserved for the company's Logo and byline. This will be clearly visible for the whole year and remain unaffected with the sheets changing for each month.

The remaining area on the stand (9in x 6in), front and back, is also left for the company to display more information pertaining to it.
(see figure)



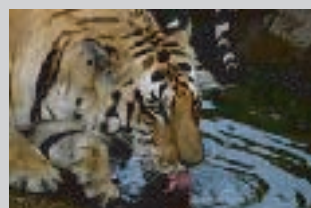
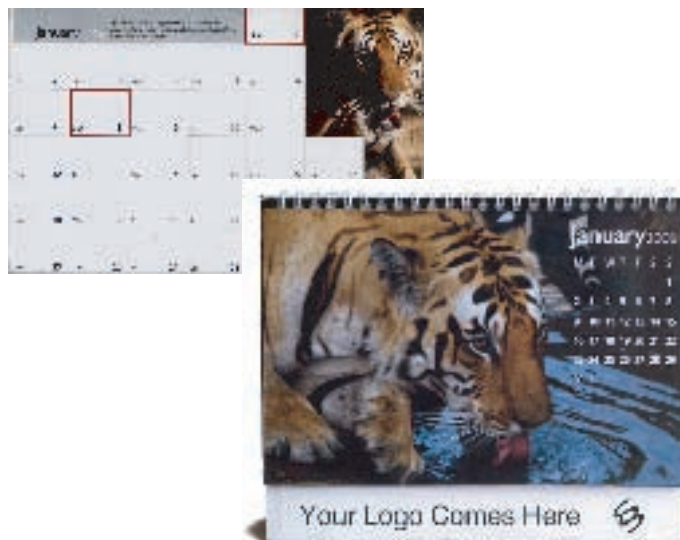
Calendars for 2006

Tigers of Kanha National Park

The tiger is arguably one of the most striking and majestic of animals, but with less than 3000 tigers left in the wild today, the species faces an unprecedented crisis. Without serious intervention, this magnificent animal could well be extinct in the next ten years.

With the tiger being the 'apex' species on the natural food chain, the survival of the tiger is inextricably linked to the survival of wild places and all the animals that live in them. This calendar is a tribute to the tigers of Kanha National Park.

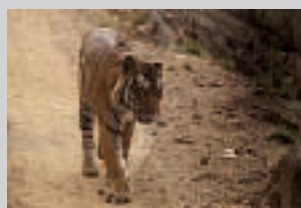
This calendar includes an elegant year planner.



January



February



March



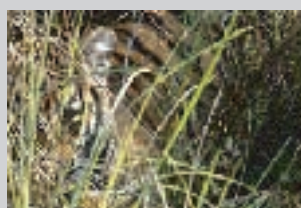
April



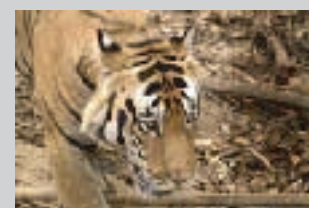
May



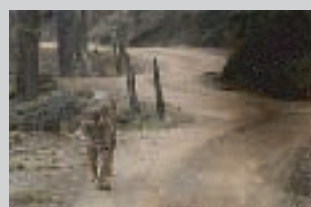
June



July



August



September



October



November

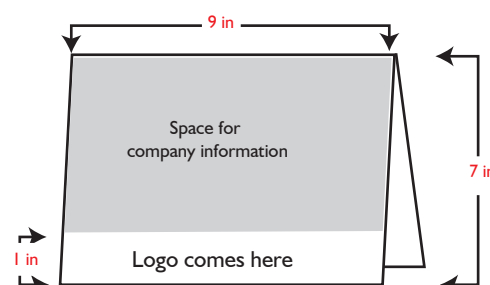


December

Stand layout

The area below the image (1 in x 9 in) has been reserved for the company's Logo and byline. This will be clearly visible for the whole year and remain unaffected with the sheets changing for each month.

The remaining area on the stand (9in x 6in), front and back, is also left for the company to display more information pertaining to it.
(see figure)



Calendars for 2006

Pricing and Ordering

Nos.	Price/Calendar (Rupees)
100 > 499	90
500 > 999	60
1000 > 2000	55
2000 >	45

- Shipping and Delivery Charges Extra for customers outside Bangalore.
- Minimum order of 100 calendars
- Price inclusive of company's Logo and stand artwork printing in 2 Colors only.
- Payment can be made by Cheque /DD in favor of Narayan Gopalan or Siddharth Rao.
- Payment: 50 % advance and remaining on delivery.

To place and order or further information please contact either

Siddharth Rao

Ph +91 80 2558 7238

Mob +91 98454 33759

Narayan Gopalan

Ph + 91 80 28425291

Mob + 91 9880043317

E-mail bydesign.bangalore@gmail.com



We look forward to your response.