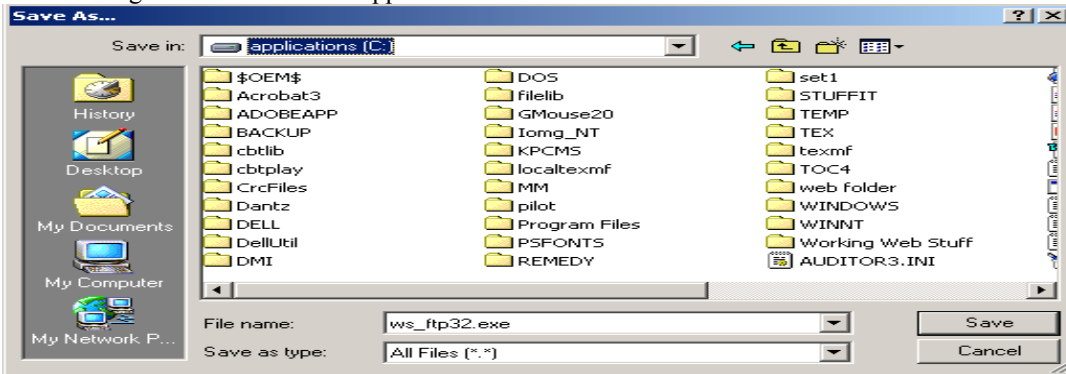
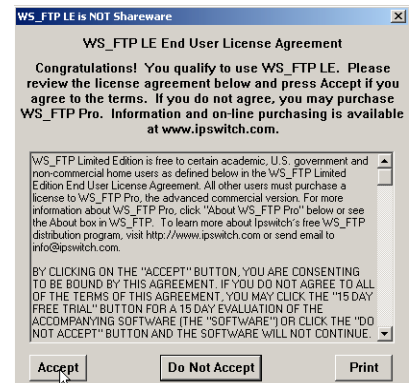
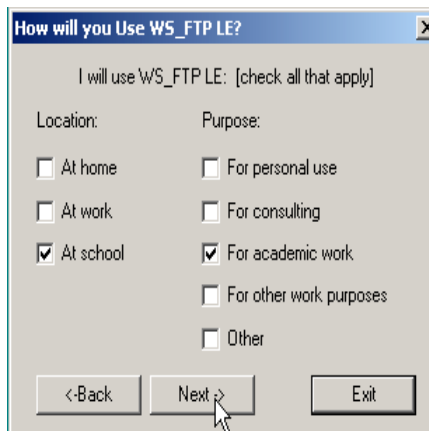
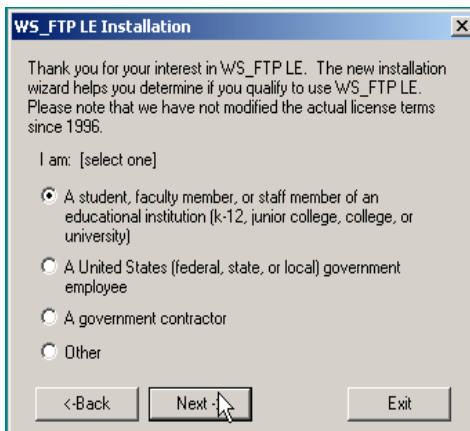
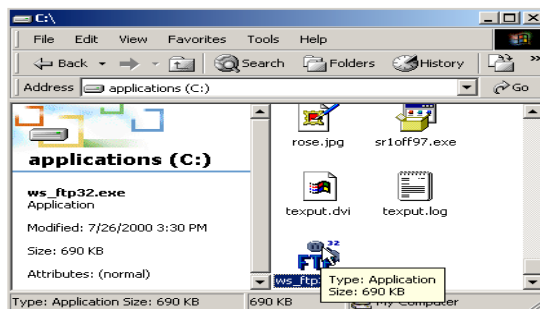


INSTALLING WS_FTP

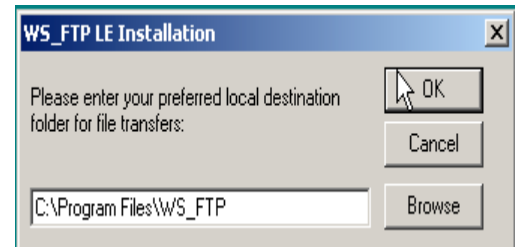
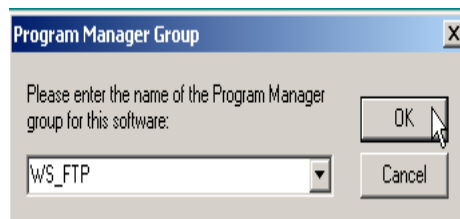
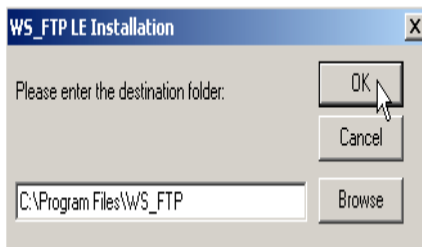
1. Launch Netscape
2. Visit <http://www.stanford.edu/people/markb/wsftp/>
3. Click on the button to download WS_FTP
4. A dialog box "Save As" will appear. Choose the C:\ drive



5. Press the "Save" button
6. After the ws_ftp32.exe file has been saved to your C:\ drive, quit Netscape.
7. Open your C:\ drive, find and launch (double-click on) ws_ftp32.exe



8. Choose **Install WS_FTP** then press **continue**
9. Choose **Student** then press **next**
10. Choose **At School** and **For Academic Work** then press **next**
11. Choose **Accept**



12. Accept the default choice by pressing "OK"
13. Accept the default choice by pressing "OK"
14. Accept the default choice by pressing "OK"