



Home Club Professionals



Diane Clysdale

Diane skated competitively locally and regionally. She was a MN State medalist and an Upper Great Lakes competitor. She earned a Bachelor of Science degree in Dental Hygiene/Public Health from the University of Minnesota. From 1983 – 1998, Diane was the assistant director of the Columbia Skating School. Diane has been a staff professional with the RFSC since 1987 and currently teaches private lessons including freestyle, figures and Moves in the Field. She is also a substitute staff professional at Roseville and White Bear Skating Schools. She is a current member of PSA, USFSA and ISI. Diane resides with her husband and children in Roseville.

Phone: 651-490-1714, e-mail: mclysdale@maguireagency.com



Lindsey Goff

Lindsey skated competitively for 9 years in local, state, and regional competitions. She also skated on a senior synchronized team who competed at sectionals and nationals. She has trained with national and Olympic coaches and has passed her USFS Gold Moves and Gold Freestyle and ISI Freestyle 8 tests. She has been coaching at the Roseville Ice Arena for 5 years and is involved in coaching both the RFSC synchronized skating teams. Lindsey currently attends the University of St. Thomas and skates with the University of MN collegiate synchronized skating team.

Phone: 651-329-5057, e-mail: imgoff@stthomas.edu



Mary Halverson

Mary is a current professional for both the USFS and the ISI. She has been coaching for 28 years, and is a past skater for the St. Paul FSC and the Roseville FSC. She has trained skaters in freestyle, figures, moves in the field, precision and power classes. She has worked with beginners through senior level and pre-alpha through FS 9. Taking skaters to local, state and Upper Great Lake competitions, also national/world competitions. Current Director of the Roseville Figure Skating School. Her priority is helping students to reach their goals, and strongly believes in not only teaching the aspects of skating, but also the importance of learning life skills.

Phone: 651-646-8351, e-mail: halverson63@comcast.net



Rebecca Jacobson

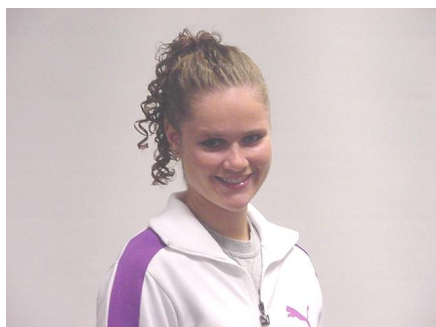
Rebecca has been coaching for 15 years and has been with the Roseville FSC since 1995. She is a member of USFS, ISI and Professional Skaters Association (PSA) and holds ratings in freeskating, Moves in the Field and group instruction. She enjoys helping skaters of all ages and abilities to set and achieve their goals, from beginners through Regional medalists. With her extensive background in dance and music, she particularly enjoys choreographing competition and test programs, skating show programs and musical theatre productions. She earned her B.A. in music (violin and vocal performance) from Luther College in 1994. Rebecca is an active musician and teaches at MacPhail Center for Music in Minneapolis and Metro Music Studio in Roseville. **Phone: 612-860-3477**



Amy Koland

Amy has been coaching since 1989 with experience in Figures, Freestyle, Moves-in-the-Field, and Synchronized skating. She enjoys coaching beginner through advanced level skaters recreationally and competitively in ISI and USFS programs. Amy earned a BA degree in Psychology from Hamline University and is licensed in elementary education (K-6). She currently teaches for the White Bear Lake Skating School and the Roseville FSC.

e-mail: Akolandsk8@comcast.net



Kelli McClellan

Kelli is a USFS and ISI member she skated competitively for 10 years in local, state and regional competitions. She has trained with National and Olympic coaches and has passed her USFS Gold Moves and Novice Free Skate, and her ISI FS9 tests. She has been teaching at the Roseville Ice Arena since the Fall of 1998. She coaches beginning thru advanced skaters. She will graduate this fall from the University of MN with a degree in Architecture, Financing with a Math Minor. She currently skates with the University of MN Synchronized Skating Team.

Phone: 651-592-6583, e-mail: Quadkell@aol.com



Maria Merabella-Slabiak

Maria skated with the RFSC for 10 years. She has a B.S. in Interior Design from the University of MN. She has been coaching for 15 years. She is currently a coach with the RFSC and the Co-Director of the Roseville ISI Skating School. She is a member of USFS, a Gold Rated judge for ISI, and a PSA member who holds ratings in both Freestyle and Moves in the Field. She works individually with both competitive and non-competitive skaters and has experience teaching Freestyle, Figures, Moves-in-the-Field, on and off ice Power Skating classes, and Choreography and Style workshops. Maria has always enjoyed the creative and expressive aspects of skating. She encourages her students to focus on their individual strengths and to develop their own style.

e-mail: mslabiak@billyseven.net



Sue Olsen

Sue has been coaching competitive skaters since 1989, including beginners to Regional medalists. She is a USFS and ISI member, and holds ratings with the PSA. She is the owner and director of the Fun on Ice Skating School, a former Regional medalist, as well as a current synchro National competitor. Sue has a B.A. degree in Economics from the University of St. Thomas. She enjoys teaching skaters of all ages.

e-mail: sb_olson@hotmail.com



Pamela Sandborg

Pamela has been skating since she was six years old and has over 30 years of coaching experience in freestyle, moves in the field, ice dancing and synchronized skating. As a professional skater she toured for four years with Holiday On Ice International. She is ISI gold rated, synchronized skating PSA Certified Team rated – coaching at all levels - and maintains active memberships with USFS, ISI & PSA. Pamela has completed her time with the Air National Guard and is now looking forward to devoting more time to her love for skating and has openings for all levels of new students.

Phone: 651-644-1412 e-mail: pamela@sandborg.net



Becky Schmid Krueger

Becky has been coaching since 1995. She has taught in many cities and previously was director of the Eagan skating school. Becky teaches all ages, abilities and types of skating including freestyle, moves, ice dance, basic skills, choreography, power, hockey, synchro and off-ice dance fitness classes. Her skating accomplishments include ISI freestyle 8, USFSA Gold moves, Junior freestyle, Silver dances, and 3rd Figure tests. She is PSA accredited and an ISI judge. Becky has a bachelor's degree from Hamline University in psychology and anthropology. **e-mail: nasheetadance@gmail.com**



Paula Schwartz

Paula has been a USFS, PSA and ISI affiliated figure skating instructor for groups and individuals for over 20 years. Her experience includes initiating and developing a profitable recreational ISI skate school, as well as planning 9 of its annual ice shows—from music editing and costume design to props and choreography. Paula is a former USFSA and USI local competitor, as well as USFS regional competitor. Qualified to instruct figures, Moves in the Field, as well as USFS and ISI freestyle for all test levels.

e-mail: pjschwartz@comcast.net