

How to Make Custom Icons with a flash drive and some time.

OliverK

First, you'll need to download the following pieces of software:

- > *Portable Apps Launcher Kit*. It comes from here.
- > *The GIMP Portable*, here.
- > *Calipers*, here

Some optional, but highly advised software:

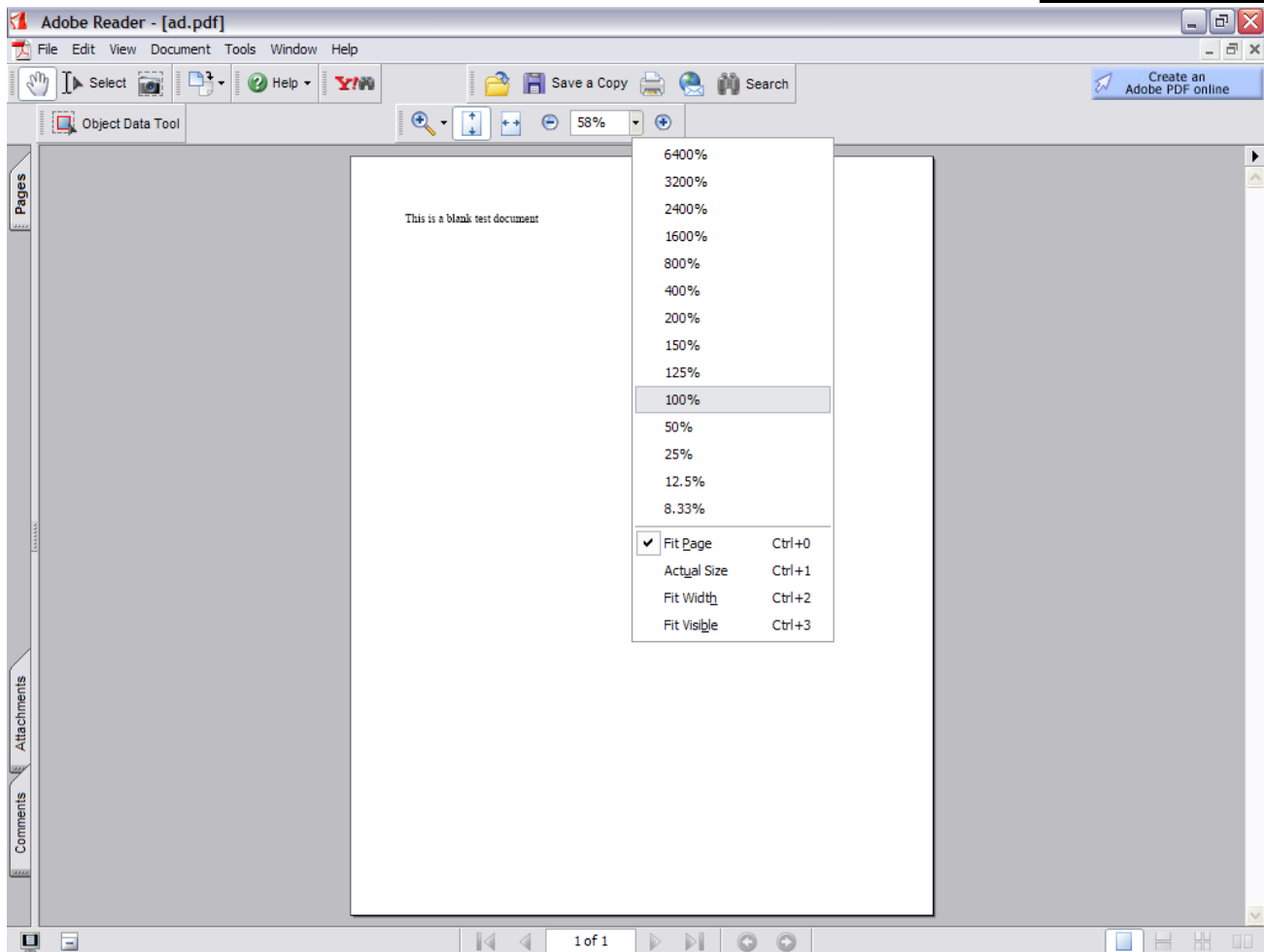
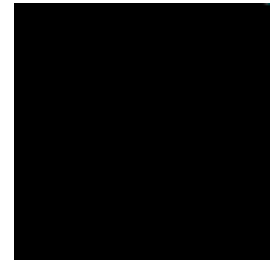
- > *Icon Sushi Portable*, here
- > *Fast Stone Screen Capture*, here

You will need a flash drive with at least 64 mb. A 128 drive or bigger is advised, since you may find that you're quickly using all the available space on your drive.

Note It is not necessary to have the Portable Apps Launcher, however, I do advise it as it makes life a little easier.

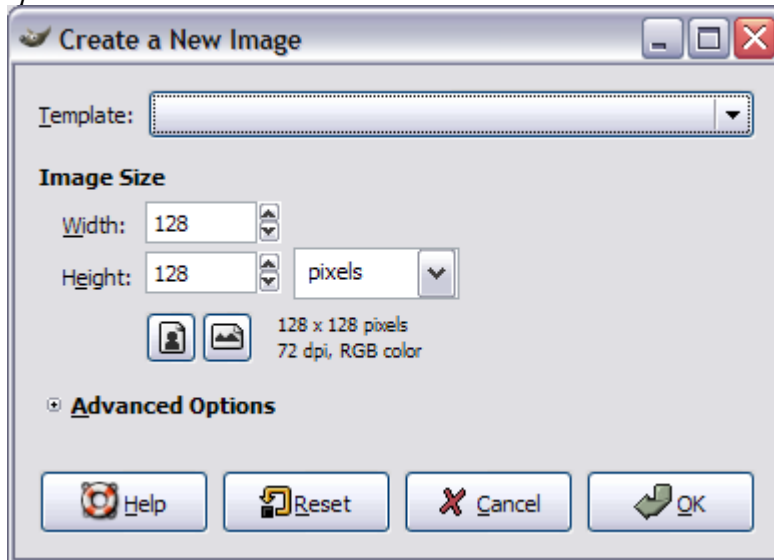
Icon size limits vary, but the normal size is 128 pixels by 128 pixels, about this big:

If your image is as big or smaller then that square your in luck. Now, a word of caution: this only works if the text is viewed at 100% its size.



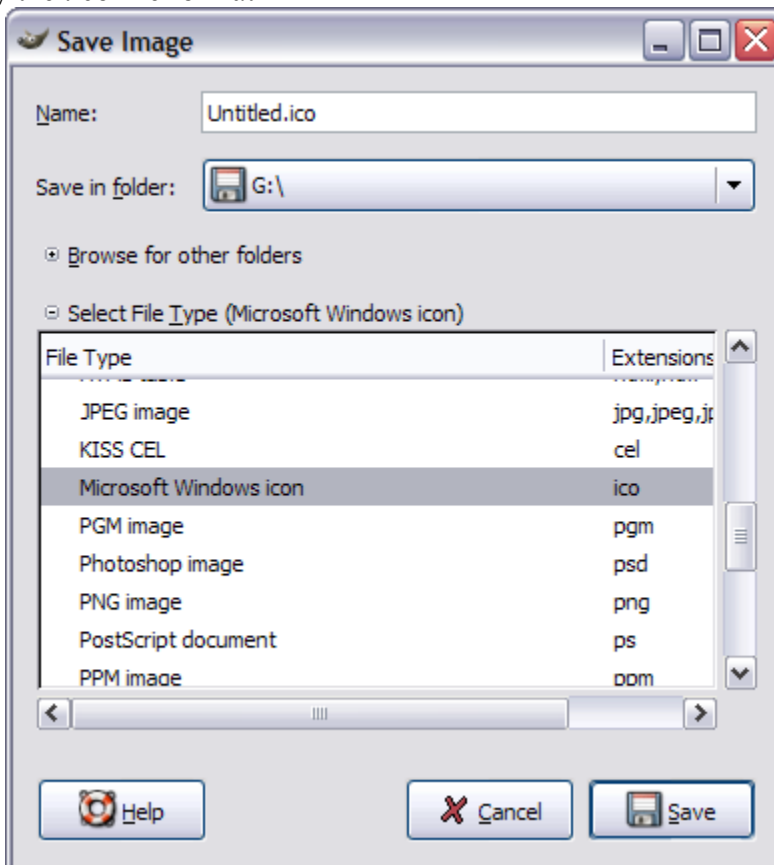
Find the button that controls the percentage that you're seeing the document at 100%. This screen shot illustrates it. Note that the *Calipers* I suggested would make this task easier. You can right click on an image and click **Save As**. If this option is unavailable, you can utilize *FastStone* to capture the screen image. Save it to your flash drive as a **png, gif, or bmp**.

Using the GIMP software open up a new document sized 128x128 pixels, or size a new drawing in paint utilizing the *Calipers*.



Now copy/paste in the picture you want made into an icon.

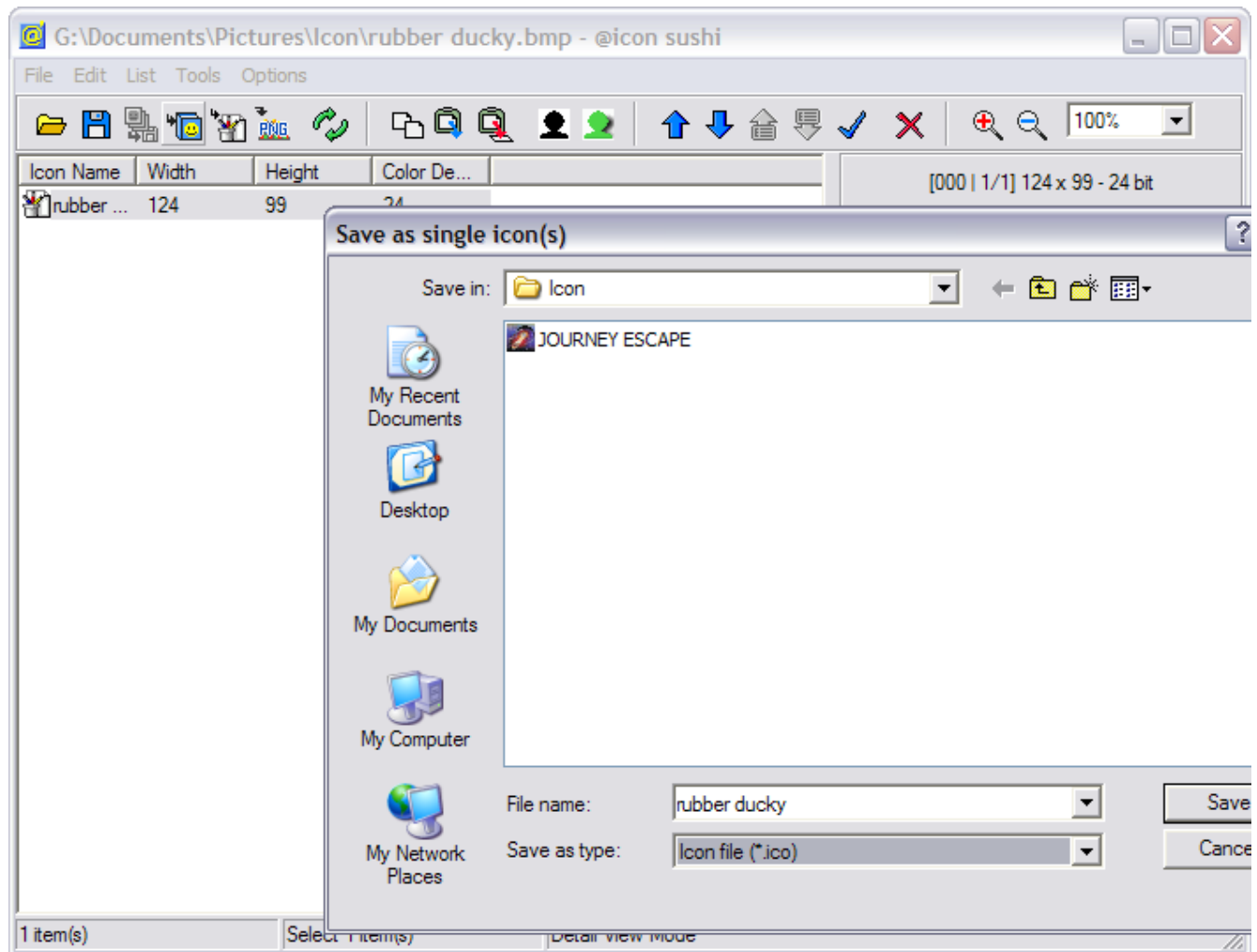
When saving, specify the .ico file format



Save with a file name and you now have a .ico format file to use on your computer.

With Icon Sushi:

Save in the format, or bmp or png or gif format. Open in Icon Sushi. Click on the Save button and export as a .ico file format. Note that white becomes a transparent background in Icon Sushi.



Type in a new name and hit **enter** or **save**.