

# The Home-Made Maglite Mount

*How many of you have played a darting game at night, and have been unable to see? In this article, Oliver Krystal reveals the way he makes his mag-light mount..-Editor*

I was sitting at my desk when the editor of Blowgun Digest called and asked if I'd like to submit an article. I said yes, then hung up and immediately thought, 'what will I write about?' Pretty soon the answer came to me: I'm revealing my custom Mag-Lite mount instructions for the world to see.



These are the materials for the Mag-lite Mount

1. Gather the materials. You'll need

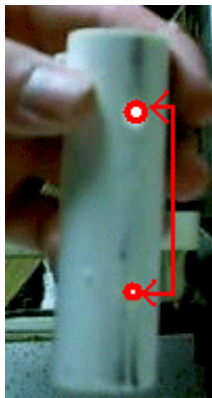
- a. A 3 1/2" long piece of 3/4 PVC
- b. Two 1/4-20 bolts, 1/2" long
- c. One 1/2" EMT conduit connector
- d. Electrician's tape
- e. Various tools:
  - i. a 1/4-20 tap and #7 drill
  - ii. something to get rid of burrs
  - iii. a Dremel

2. Begin by cutting the PVC down to size, if you haven't done so already.

3. Drill 2 holes with the #7 bit (proper drill size for a 1/4-20 tap), each about 3/4" from either end of the pipe.

4. Tap these holes; this will allow you to screw bolts in.

5. Wrap the PVC with tape, then trim the tape from the holes, that they are once again open. Screw in the 1/4-20 bolts.



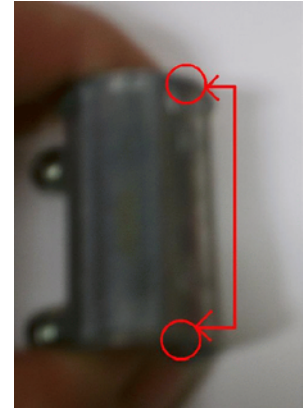
These two holes should be drilled, then tapped.



This is what it should look like when you get the bottom half done.

6. See the ridges in the red circles? Those have to be removed. Also, there's a lip on the inside of the connector. That too has to go. The best way to get rid of that internal ridge is to file it away, then to take a Dremel stone or sanding pad and get rid of the rest. You *must* get rid of that ridge. If you don't, you won't engage both of the screws.

7. Now, wrap the connector up with electrician's tape. Do a good job, and be careful to leave enough room so that you can engage the two screws to hold the whole thing on your pipe.

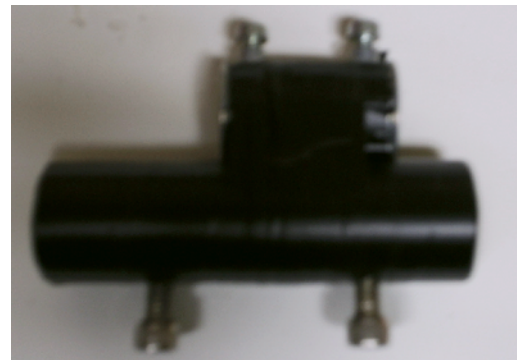


These are the ridges that have to be filled off.

8. Now, wrap up everything nice and tight. Be sure to mate the portion on the bottom of the connector that you sanded off to the piece of PVC. Go ahead and use a lot of tape. When finished it should look like this.



Top view



Side View

When you finally mount this on your blowgun, it will look like this:



All Done! Let's go for a happy blow!