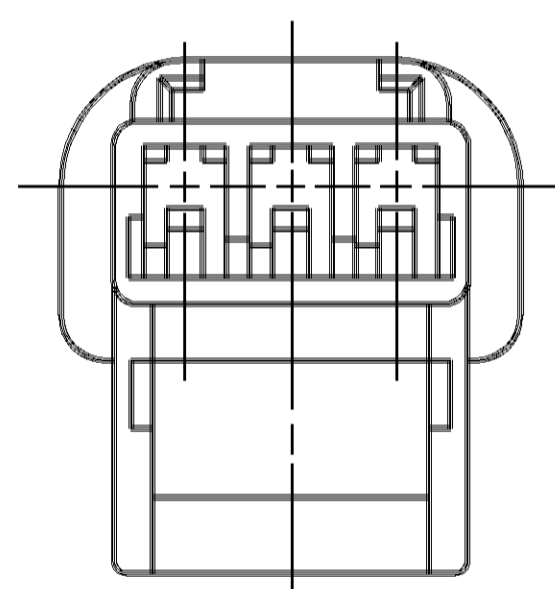
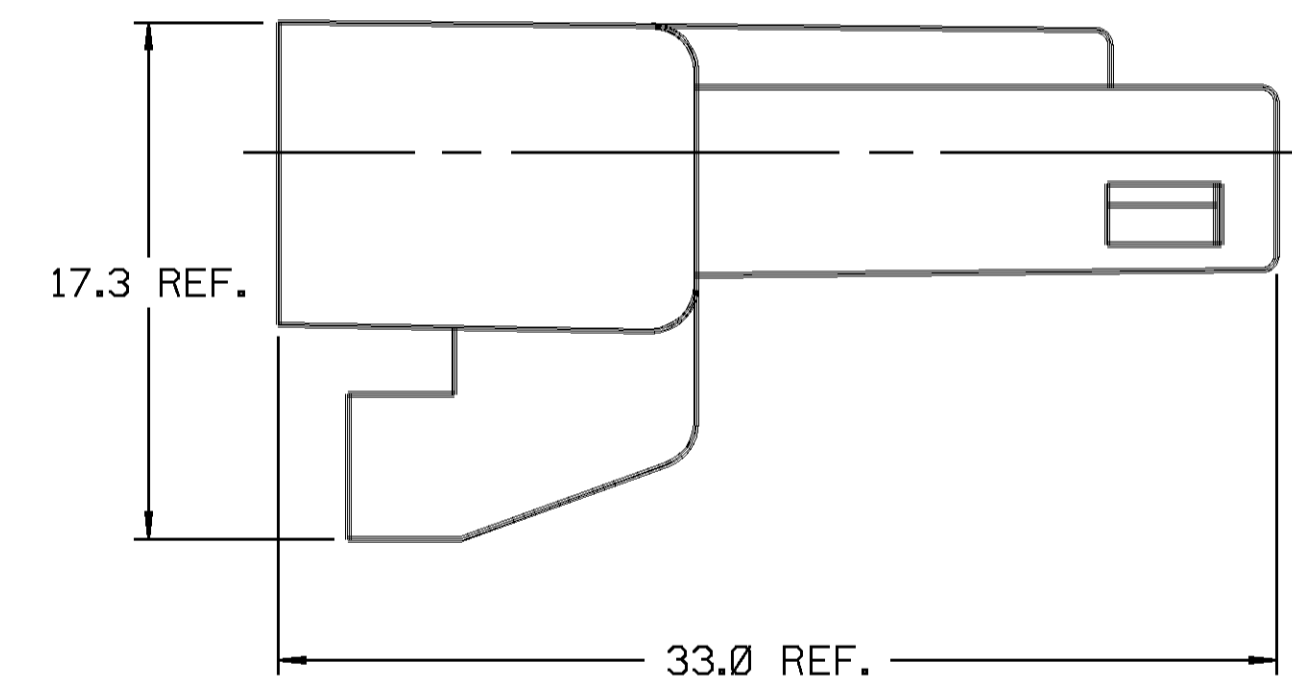
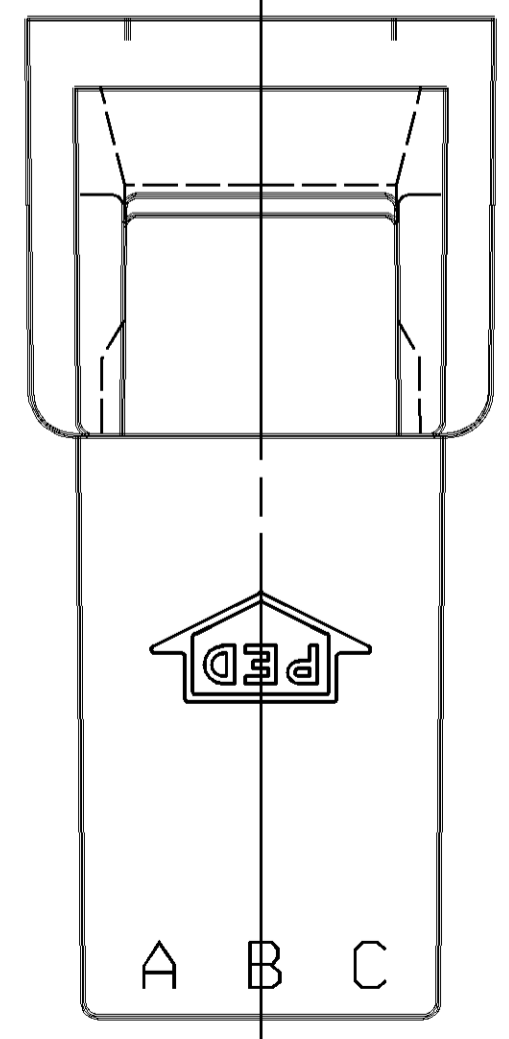
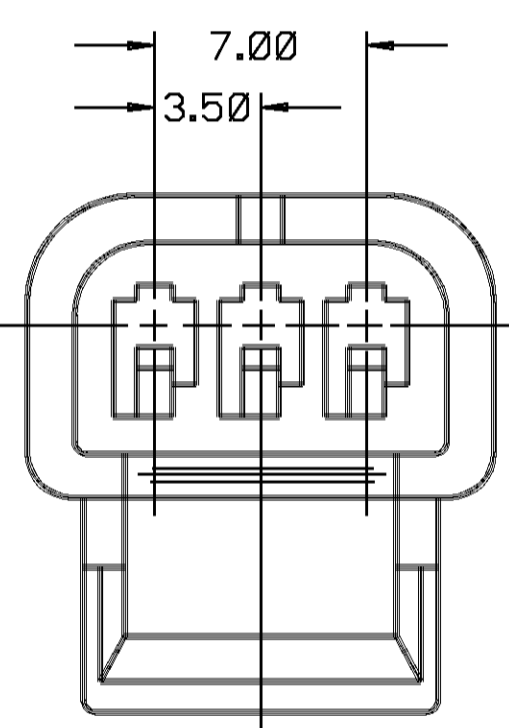
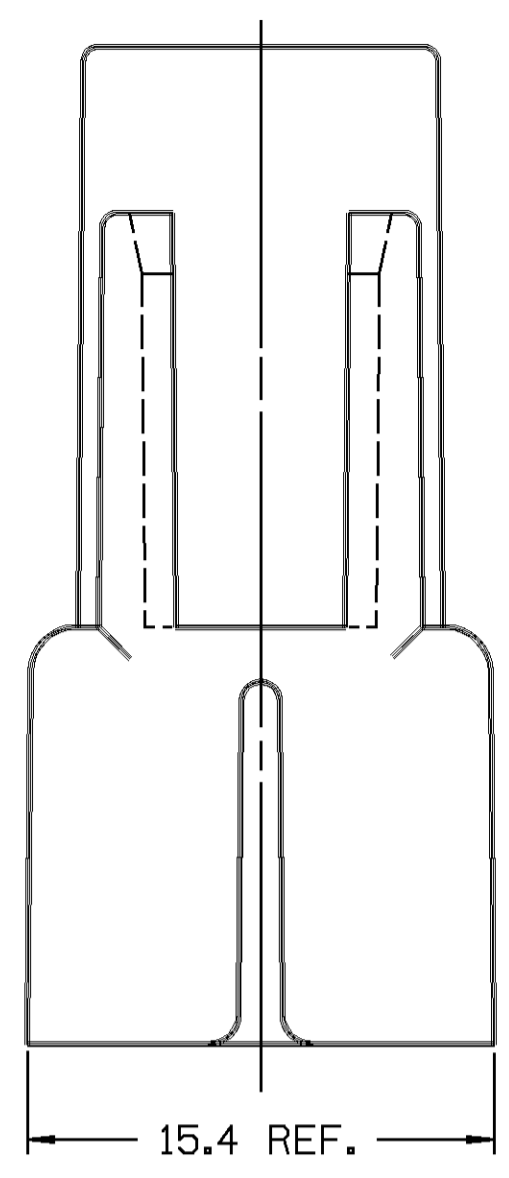


D THIS DRAWING AND DESIGN HEREON CONSTITUTES A PROPRIETARY DESIGN OF PACKARD ELECTRIC DIVISION AND IS NOT TO BE DUPLICATED OR REPRODUCED WITHOUT AUTHORITY OF PACKARD ELECTRIC DIVISION.

DO NOT SCALE



- NOTES** —
1. CAVITIES TO ACCEPT 12040993 TERMINAL OR EQUIVALENT.
 2. CONNECTOR TO ACCEPT 12047784 SECONDARY TERMINAL LOCK OR EQUIVALENT.
 3. MATING CONNECTOR - 12064758 OR EQUIVALENT.
 4. THIS CONNECTOR WILL PASS THROUGH A 20.5 DIA. MIN. HOLE.
 5. MAX. INSULATION CRIMP MUST BE LESS THAN 3.00 HIGH AND 2.60 WIDE.

DATE	SYM	REVISION RECORD	AUTHORITY	DR	CK
18SE85	A	RELEASED.	85005	AL	FH
09JN86	B	REVISED PICTURE	106854	RB	FH
22JL87	—	REVISED NOTE #5	111432	JK	JK
100C90	C	MATERIAL SPEC WAS UNMODIFIED			
		POLYESTER-BLACK	139102	GC	

PART NO. 1206 4759

PACKARD ELECTRIC DIVISION
 GENERAL MOTORS CORPORATION
 WARREN, OHIO

-0-
 3
 82V
 779
 197-A

PED / MICROSTATION		FILE SPEC: ****USER**** DGN#SPECIFICATION***** *****SYTIME*****
THIRD ANGLE PROJECTION		
CODE NO. 6900	TOLERANCE UNLESS OTHERWISE SPECIFIED DECIMAL: ONE PLACE ± 0.2 ANGULAR ± 2° TWO PLACE ± 0.10	
DWG. DATE 17JN85	SCALE NONE	DR. ANDY .T LE 240C85
EST. NO.	CK. F.HESTON	DATE 310C85
REFERENCE NO. 12064759 'E' SIZE	APPR. S.A.NORLING	DATE 05N085
	APPR. R.A.PETROSKY	DATE 05N085
MATERIAL SPEC.	IMPACT MODIFIED POLYESTER-BLACK	
NAME CONNECTOR BODY - 150 METRI-PACK SERIES - 3 MALE TERMINALS		
PART NO. 1206 4759		SIZE C
OUTLINE DRAWING		