

IDEA Annual Report 2008



Contents

IDEA Overview	3
The Resource Centre	4
The Housing Support Service	6
The Lunch Club	7
The Holiday House	8
Use It Again Shop	9
Horticultural Projects	10
Other IDEA projects	12
Development	13
Accounts and Financial Statement	14

Highlights of the Year

- Our 10 year Anniversary
- Invitation to 3rd Session Opening
- Keynote Speakers at HISEZ conference
- Record Fundraising Year
- Our latest venture— The Juniper Project
- 'The Spitting Pig' Spit Roaster
- Members Holiday in Ayr

IDEAs over the past year

This year IDEA celebrated our 10 year anniversary. From humble beginnings in a one-roomed portacabin 10 years ago, IDEA have grown into a multi faceted support service with many offshoot projects of benefit to disabled people and the wider community.

Despite issues over funding (see feature below) IDEA have battled on and were even nominated for a TFN Community Group Award in May. Although we were pipped to the post, on the back of this nomination, Margaret Shaw (IDEA Manager) and Jack Ross (IDEA Member) were invited as special guests to the opening of the 3rd Session of parliament where they were lucky enough to meet Prince Philip.

IDEAs were invited to be keynote speakers on sustainability at the HISEZ (Highland and Islands Social Enterprises) conference in April, from which we received some great feedback from other organisations.



Jack and Margaret at the opening of the 3rd Session of Parliament

This year has been a record year for IDEA for local fundraising. Ileauchs have supported IDEA for many years and as well as

our own various sales of work and events, we have attended nearly every local event with a variety of games stalls and tombolas.

Our fundraising efforts have been bolstered with the acquisition of the Spitting Pig Spit Roaster (courtesy of DIAGEO) which, operated by IDEA, has been a popular addition to community events and has brought in much needed funds for the Centre. (See our other fundraising ideas on page 3)

On the horticulture front, our most recent development is the Juniper Project and we continue to develop our market garden projects. (see more page 7)

In July, Members and staff headed to Ayr for our annual holiday. We all shared some new experiences and a great time was had by all.

(see page 3 for Jack's story)

Battle for Equality

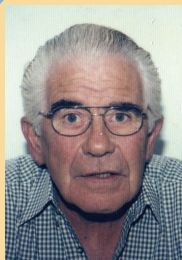
Over the past 10 years, IDEA have grown, not only in the number of people who use the Resource Centre, but also in staffing levels and indeed the services we provide. The only thing that hadn't changed was the grant from Argyll and Bute Council.

IDEA Board, Members and staff decided enough was enough and launched a campaign against the Council for equity in funding for service provision. After gaining support from Councillors, IDEA representatives met with officers from the Council who agreed to give

IDEAs an additional sum of money to cover running costs until early next year.

Negotiations will continue regarding the nature of funding in the next financial year but all parties remain positive that this is the beginning of a good working relationship.

This page is intentionally blank



**Introduction from
Alastair Shaw,
Chair, IDEA Board
of Directors**

'Welcome to IDEAs Annual Report, as you can see this year has been a time of success but also a time of consolidation and pulling together in times of adversity.

I didn't realise it at the time, but on becoming chairman of IDEA, I was embarking on a steep learning curve. Previously, I simply had not appreciated the extent and enormous value of the IDEA support network on Islay. The "E" in IDEA stands appropriately for "Endeavour" and it is a privilege to be a member of a team who, through remarkable endeavour plus constant endurance of the many frustrations and anxieties associated with funding, relentlessly continue in their endeavours to improve the quality of life for the people of Islay.

IDEA Overview

- * The Resource Centre currently has 22 Members (our alternative for the term 'service-users') in regular attendance, with 12-16 attending in any given day.
- * Members range in age from school leavers (over 19 in this case) and upwards. There is no upper age limit.
- * Members can be referred to IDEA by their GP, Social Worker, CPN or alternatively they can self-refer.
- * IDEA is a Member-Led service with 51% members on the Board of Directors and regular Member meetings to discuss issues and activities.
- * Activities and support are identified on an individual basis.
- * For details of the full range of services, support and activities IDEA provide, see overleaf.



Members and staff at Burns Cottage, Ayrshire. July 2007

Board of Directors

Alastair Shaw—Chair

Mary Stewart—Vice Chair

Leonie Fane—Patron

Lynda Cooper

Jean Rice

Flora Hutton

Ella McCalman

Morag MacKenzie

Jean Kissock

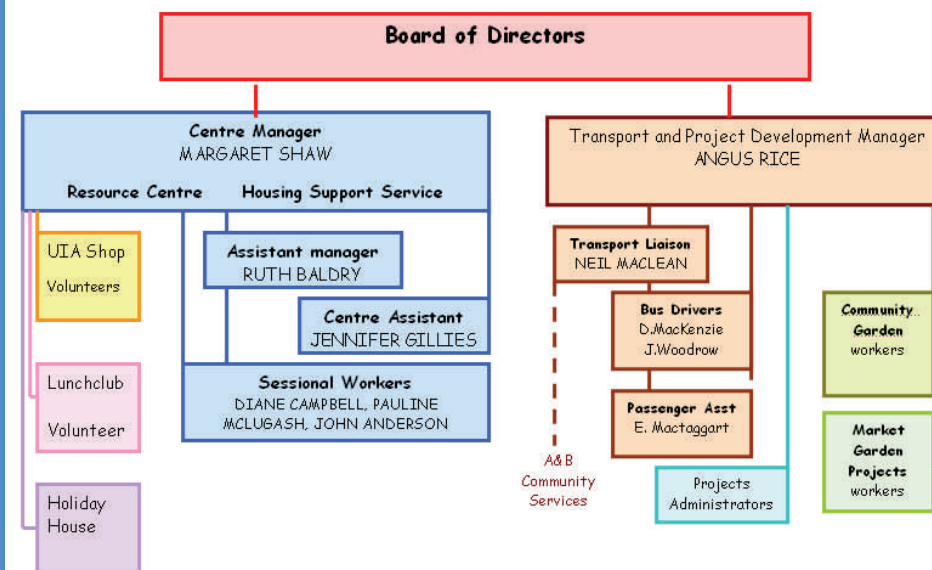
Fergus Muir

Iain Gibson

Julie Murphy (Social Work Services)

The Board meet monthly with Management staff and minutes are recorded. Employees do not have voting rights.

Organisational Structure





IDEA offer diverse range of support and activities

The Centre is a lifeline to many people at risk of isolation in this rural community.

Legislation and Accountability.

- ✓ IDEA Resource Centre operates within the National Standards of Care using a policy of dignity, privacy, safety and choice.
- ✓ IDEA has its own Charter of Rights.
- ✓ IDEA are registered with the Care Commission and are inspected annually by Care Commission Officers.
- ✓ IDEA cooperate fully with requests from Quality Assurance of Argyll and Bute Council
- ✓ IDEA have a comprehensive package of policies and procedures covering members, staff and volunteers.

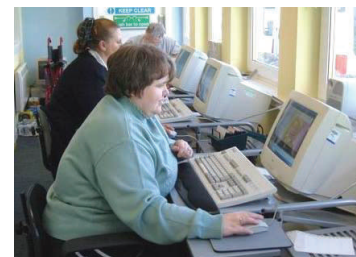
The Resource Centre

IDEA provides support services for adults living in Islay or Jura who are disabled, or have learning difficulties or mental health issues.

IDEAs offer a diverse range of activities and support which include:

- In-house training and access to college courses,
- Supported Employment and volunteering.
- Skills development - creative arts, computers and IT, interpersonal and life skills.
- Access to community events and facilities,
- Advice, advocacy and Personal Centred Planning.
- Recreational, social and leisure activities including holidays

All activities are carried out on an individual basis so Members identify their own goals and wishes. We also offer space for local therapists and advisors to come in and meet clients on familiar territory.



Previous Awards and Accolades



2001 -invited to Downing Street after winning MADD Award: 2003—Invited to Royal Garden Party after winning Queens Jubilee Award, presented by The Lord Lieutenant (with Lord Robertson at IDEAs)



Jack's Story

"I have been coming to IDEAs for about 7 years now. I like to be able get out of the house and meet people, to have a conversation and talk about different things. I also go to the shops and the library van when I'm in Bowmore. When I'm in the Centre I sometimes do crafts like making rugs and matchstick modelling which I enjoy. I get help from Ruth to use the Internet to look for things which interest me and to buy books and DVDs. I did an Assertiveness Training course with Jenny and I still have the certificate! I also get support from IDEAs in my own home. I like to go out for a trips in the car. My favourite thing this year was going to the Scottish parliament with Margaret. I got to meet Prince Philip and saw Sean Connery! It was great."



Getting a book from the library van

Fundraising events 2007/2008:

IDEA Fundraising Events

- Christmas Fayre
- Spring Fayre
- IDEA Open Day
- Car Boot Sale

Attending Community Events

- Feis Market
- Bruichladdich Distillery Open Day
- Duck Derby
- Islay Agricultural Show
- Islay Airport Open Day

"2007 was a record year for local fundraising, almost double that of last year"

Margaret Shaw, Manager

Internet Fundraising



Buy.at/IDEA



the weatherlottery.com

Recycle 4 Charity.co.uk

Funding the Resource Centre



IDEA have always managed to run their services within a tight budget. The main funding source for the Resource Centre is a small grant of £26,000 /yr from Argyll and Bute Council, as mentioned on page 1. As this falls well short of the overall running costs of the

Centre, IDEA have therefore had to come up with many innovative ways of raising funds to cover the deficit. This includes:

- ✓ Grants
- ✓ Donations,
- ✓ Internet fundraising (see below far left)
- ✓ Hosting events—sales of crafts/handmade goods
- ✓ Attending local events (see far left) .
- ✓ In-kind donations eg, materials, facilities and volunteer hours,
- ✓ IDEA use It Again shop (see page 7)
- ✓ Catering for training days/meetings (soup and sandwiches)

Generating income:

Development of current projects:

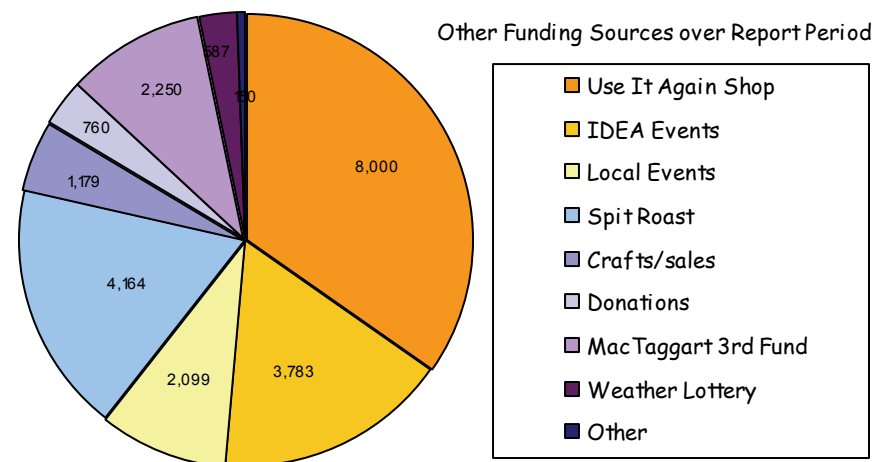
- Increase use of the Holiday House.
- Increase sales of goods on Ebay.
- Push sales of The Weather Lottery.
- Increase potential of UIA Shop.

Future Projects :

- Working in partnership with a local business producing re-usable pharmacy bags

Resource Centre Funding Breakdown

A&B Council Annual Grant £26,000 (+A&B Council Contingency Grant £70,000)
Supporting People £41,000 Other Fundraising: see below



Providing support in a person's home has many benefits and consequences;

- 1) **For the individual** by enabling people to maintain their tenancy and independence, reducing the risk of self neglect and issues associated with isolation.
- 2) **For the Community** by keeping people close to friends and family in their own environment.
- 3) **To Other Agencies** by reducing the need for hospital admittance, long term stays and residential care. Crisis situations are averted by staff identifying issues early, reducing workload of GP, CPN and Social Work department.

'If it wasn't for IDEAS, I probably wouldn't leave the house..'

How it Works:

IDEA are paid by Supporting People for providing 74 hours of support to clients, the majority of which are used in clients homes. Some hours are used to provide support on trips to the mainland for hospital appointments etc, holidays, providing transport and support in the workplace and other related tasks, eg shopping, cooking, benefits advice and advocacy during Centre Hours.

Housing Support Service



The Housing Support Service is funded by Supporting People. We currently support 11 people in Islay. Staff work flexibly with individuals in their own homes, offering appropriate support when required to help maintain independence. This can include any or all of the following:

- ✓ Arranging professional help - making appointments or arranging home visits
- ✓ Assistance with arranging adaptations to your home
- ✓ Assistance with filling in forms, reading or replying to written material.
- ✓ Advice/assistance with benefits
- ✓ Help and advice with life skills, home management and healthy eating
- ✓ Help and advice with budgeting and finances.
- ✓ Shopping and other errands

Stanley's Story

I recently moved into my own flat and the Housing Support Service has been really useful for me.

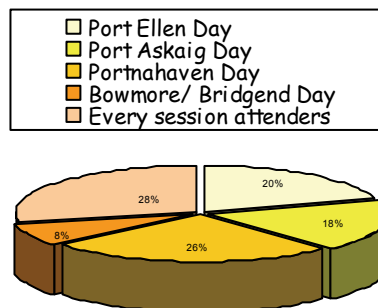
I get support to get my weekly shopping, including help with writing my shopping list, and Pauline always manages to point out the bargains and special offers!

We go for walks around the village, and to local events and cafes which I wouldn't really do on my own. To be honest, if it wasn't for IDEAS I probably wouldn't leave the house or speak to many people so the social contact that this service brings is most important.

When I was ill recently, people popped in to check on me without it being their time to work. It's nice to know people think about you.



Island Wide Usage 07/08



"I look forward to coming to the Lunch Club every week"

The role of volunteers at IDEA

Volunteers play a big role in the running of IDEAs various projects. The Lunch Club and Use It Again shop rely almost entirely on volunteers to keep the service running. Volunteers also work in the Resource Centre and the Community Garden as well as assisting at our many fundraising events.

Volunteers go through the same recruitment, Disclosure and induction processes as employees and are valued members of the IDEA team.

The Lunch Club *'Tigh na Greine'*

IDEA run their Older Person's Lunch Club at the Resource Centre on Mondays and Fridays. The Lunch Club is open to any older citizens in Islay. For a nominal fee of £3.50 visitors get door-to-door transport, tea and coffee, a two course lunch, entertainment as well as the opportunity of socialising with friends and visiting shops, the bank, friends etc in Bowmore.

To cope with the demand for the service, the Island has been split into four main areas - Bowmore, Port Ellen, Portnahaven and Port Askaig, each visited on a fortnightly basis.

The Lunch Club is Managed by the Centre Manager.

As well as an employed cook, the Lunch Club is run by a team of volunteers, some of which are IDEA Centre Members who get the opportunity to develop life-skills such as food preparation, kitchen management and working with money.



Rhona using her cookery skills

My Lunch club

I love coming to the Lunch club. We're always laughing and having a good time. We get a proper, wholesome meal and plenty of it! We have good discussions and catch up on the local news and when we play the different games and quizzes, its surprising what you can learn. Its nice to meet people your own age, with the same experiences and interests as yourself. When you're older, its easy to get into the habit of staying in your house and not seeing anyone else. I look forward to coming to the Lunch club every Friday, you always feel better when you leave because you've had such a good time!

Dennis Turvil



Case Study: a volunteer's story



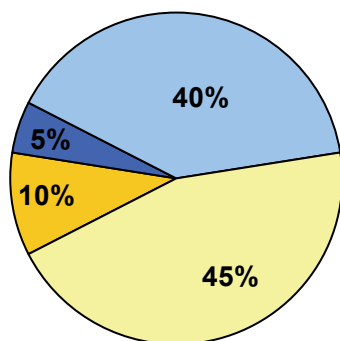
I have volunteered at the lunch club since it began 4 years ago. I've always enjoyed working with older people, I had some free time and felt I had something to offer. I enjoy the work and the people who come to the lunch club are great (although I often find thinking up new and exciting games and entertainment a challenge!)

My favourite lunch club moment is Christmas when we bring all four areas of the Island together for Christmas lunch. Its great to see people from all over the island meeting up and socializing.

The Lunch Club is a great idea. Its important that there is a venue for older people especially in a place like Islay. I think the fact that people keep coming back year after year speaks for itself.

Isobel Hardie

■ Argyll
 ■ Local
 ■ Mainland with local relations
 ■ Other Mainland



House Bookings by Geographical Area

"We had a great time visiting our son and his family which would not have been possible without the 'IDEAs' cottage. We cannot express how much this holiday has meant to us.."

House Advertising/Marketing 07/08

- ⊕ Local press
- ⊕ Email marketing
- ⊕ IDEA Website
- ⊕ CADOISPA Website
- ⊕ Disabled Holiday Directory website
- ⊕ Disabled Holiday Information website
- ⊕ RADAR Holiday Guide
- ⊕ Other organisation newsletter: ACUMEN, HISEZ, Paisley Carers Network

Accessible Holiday House

'12 Ceol na Fairge'

IDEAs leased the property from West Highland Housing in November 2005, with the view to running it as an accessible Short Breaks and Holiday house.

The House is fully accessible with specialised facilities and is available to both visitors with disabilities, and to local people for short breaks from carers and for gaining lifeskills experiences.

In our second year of running the house, we feel it has proved to be a much needed facility by both locals and tourists alike. We have even received enquiries about the house form as far afield as Italy and Australia.

IDEAs are very keen to promote this facility and have advertised the Accessible Short Breaks and Holiday house both locally and nationally:



12 Ceol na Fairge

The 1st fully Accessible holiday house in Islay

Pricing

	Peak/ Christmas	Off peak
Per week	£400	£300
Per night	£75	£65

(There follows sliding price scale for individual nights up to 1 week).

Usage

This is only our second year in operation but the house has been used consistently well over the past year (see diagram below right), with a nominal rise in bookings from last year.



Other than general holiday makers making use of accessible facilities, the majority of bookings have come from disabled people who now have the opportunity to visit relations on Islay.

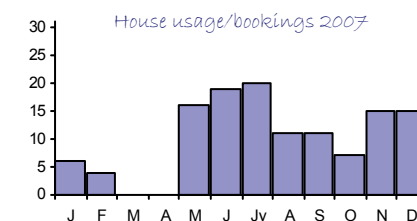
Future Development

We hope to work in conjunction with the Local Authority and increase the number of local people using the house as a break from carers.

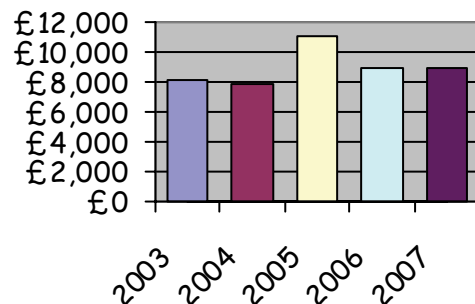
As with any holiday house, usage tends to be seasonal.

To extend our holiday season we are considering running special offers during off-peak times.

We have had great feedback from our visitors so far and feel strongly that the facility will continue to be well used.



Income from UIA shop over past 5 years



"Re-Use is the best form of recycling!"

Dave Protherough, ReJIG



Items of value that come into the shop are sold on the internet auction site to maximise their selling potential.

Use It Again Shop

- IDEAs Use It Again shop opened in 2004. Based at the Royal Arch Building in Bowmore, it sells second hand clothes, books and bric-a-brac.
- Donations of goods come from the local community who have embraced the opportunity to 'reduce, reuse and recycle'.
- The shop is run by volunteers, which include IDEA Members, providing opportunities to improve and develop skills in a community based environment.
- Not only does the shop provide a valuable income for the organisation but is also highly valued and supported by the community.
- What we are unable to sell ourselves then goes to another local community recycling project, REJIG, and is ultimately transferred to other mainland concerns such as the Red Cross or Blythswood Care.



May and Allison having fun working in the IDEA shop

Reduce, Reuse, Recycle



As well as encouraging Members and staff to recycle paper, glass, cans and plastic, IDEAs also have embraced an eco-friendly attitude in the way we work and the goods the Members produce. Much of the materials the Members and staff use are reclaimed or recycled (see below). This year IDEA Members sold reusable fabric shopping bags and our line in handy carrier bag holders (to store and reuse carrier bags) were as popular as ever. IDEAs also have our own pre printed bags for sending ink-cartridges and mobile phones to be recycled via Recycle4Charity - For every cartridge and phone recycled, IDEA receive a payment.

New from Old

In the Resource Centre, the Members and staff have come up with many innovative ways of re-using materials. As well as saving the environment, this can save us some money too.

Fabric from donated clothing is used to make patchwork, cushions, bags, toys and gifts; duvet covers and pillowcases are cut into strips and woven into rugs; donated wool is knitted into a variety of objects; jewellery is deconstructed and remodelled; greeting cards are cut up and reused, zips and buttons are reused wherever possible. Uncompleted craft projects are often handed in— woodkits, needlework projects, half knitted jumpers etc and we endeavour to finish these off and sell them on.



As well as volunteering opportunities, IDEA provide employment and training opportunities for a variety of people including the long term unemployed and young school leavers.



IDEA this year employed some people on a temporary, seasonal basis, some via the New Deal Scheme and some through Youth Scotland. All overseen by a full time gardener

' I wanted to do something physical, where I could work with my hands'

Rebecca, Garden Worker

The Juniper Project

Since March 07, IDEA have been working in partnership with Dr Richard Gulliver on a project to conserve Scotland's Native Juniper (see pic).

IDEA provide facilities to grow on cuttings and cultivate plants while providing opportunities for training in horticultural practices.



Horticultural Projects

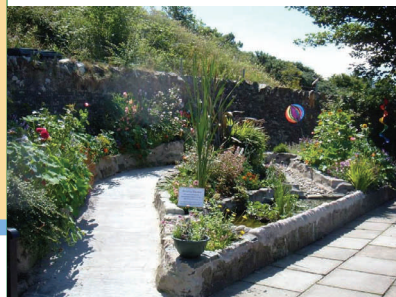
As well as Social Care concerns, from the outset IDEA have been involved in Horticultural projects. These now include:

- ⊗ The IDEA Community Garden
- ⊗ 2 Market Garden projects
- ⊗ Islay Garden Care
- ⊗ The Juniper Project

Aims of the Horticultural Projects:

- 👉 To develop horticultural skills in disadvantaged people eg disabled people, older persons, the young and long term unemployed.
- 👉 To provide employment, volunteer placements and training opportunities.
- 👉 To sell fresh home-grown produce to local people

The Community Garden



The Community Garden was the dream of one of IDEAs founder members. Created in 1997, it was featured on the Beechgrove Garden 'Hit Squad' and won their 'Community Corner Competition' the following year..

The garden is now well established now and continues to be an area of tranquillity to enjoy at any time. It has also proved to be a special place for weddings and photographs and is the venue for IDEAs annual Open Day.

This year, the Garden benefited greatly from the hiring of a full time gardener.



Features of the Community Garden:

- ⊗ Fully Accessible- all areas ramped or flat level.
- ⊗ Accessible raised beds
- ⊗ Sensory Garden with water feature
- ⊗ Marriage Arch with barrel seats
- ⊗ A variety of seating areas including picnic tables and a 'quiet' area.
- ⊗ Two greenhouses
- ⊗ The "Rocket" composter
- ⊗ Sales section



"These projects are great—they make good use of unused ground, create employment and provide training for younger people"

Stevie Rice, Volunteer Gardener

Seed of good Islay idea backed by potato firm

A POTATO packer has donated three tonnes of seed potatoes to members of a disabled support group on the island of Islay.

Following a request from Islay Disabled Enthusiasts and Action group (IDEA), the UK's leading potato packer, Branstons Ltd of Oban, responded with this massive donation from its Perthshire base.

The potatoes, which left Abernethy last week, will be grown and sold on Islay with the proceeds being used to fund the group's efforts.

IDEA supports adults of all ages with physical disabilities, learning difficulties and mental health problems. It aims to promote social inclusion by actively engaging with the community and empowering its members through educational and recreational activities.

The group made the request as part of its market garden project, which aims to increase the amount of locally grown produce, helping to make the island more self-sufficient and reducing its reliance on the mainland for groceries.

Once grown, some of the potatoes will be used for the group's twice weekly lunch club, with the majority of the yield being sold to island residents and businesses. The money raised will be used to support the group, which has been in existence for just over ten years and is in constant need of new revenue streams.

"We're extremely grateful to Branstons for this generous donation," says Angus Rice, project development manager at IDEA. "Without the support of community-oriented companies like Branstons we wouldn't be able to carry out our community initiatives, such as the Market Garden project, that promote social inclusion as well as securing an extra revenue stream to keep the group up and running."

Eric Ritchie, Branstons' general manager in Scotland, "We're really pleased to be involved in such a positive project and we hope that the potatoes they yield will go some way in helping to support the group's aims and objectives."



Jim Aitken, senior field manager for Branstons, left, and the firm's quality assurance manager Andrew Madie, are pictured with the seed potatoes for Islay.

Oban Times 17 April 2008

This year IDEA received an amazing in-kind donation of three tonnes of seed potatoes from potato packer Branstons Ltd.

This generous act was a huge boost to the market garden projects. The spuds will be used in our Lunch Club and for resale locally which should generate income for the organisation.

Thanks Branstons!

Market Garden Projects



Stevie selling produce at the Islay Show

In this current climate of healthy eating and reducing food miles, many people are being encouraged to shop locally. In response to the lack of local fresh produce for sale, IDEA were inspired to develop their existing horticultural projects to encompass vegetable production on a larger scale and have developed 2 Market Garden projects on Islay. These projects were also designed to provide employment

and training opportunities for local people (see pge 10) and this year employed 4 people who gained experiences from all three areas of development: Nerabus—the large scale agricultural project, Knocklearach— the more contained cultivation area and the Community Garden—the established horticultural area. This year, IDEA were also granted the use of a large polytunnel by a local man, which was used to produce salad vegetables on a large scale.

IDEA sell produce at local events, within the Resource Centre and Lunchclub and to local businesses which brings in extra revenue for the organisation.

Nerabus



Sowing potatoes at Nerabus

Nerabus is a 3 acre field gifted to us by a local farming family. It has been designated to produce potatoes and root vegetables on a large scale.

This year we planted over thirty 25Kg bags of potatoes.

The job was made easier by the use of the tractor-pulled potato planter which made a huge difference—Last year the job was done by hand!. The harvested potatoes were sold locally on stalls at local events, and at the Resource Centre itself and were also used at the Lunchclub.

Knocklearach



Knocklearach—Newly ploughed

Knocklearach is a walled garden on Dunlossit Estate granted to IDEA for the development of a Market Garden. The site will be used to produce salads, vegetables and fruit trees and will be integral in the cultivation of

Juniper. There are also plans for a heated greenhouse, wind turbine and workshop. This year we carefully prepared the site for development. Fruit trees were planted in tubs ready to be transplanted into the garden. The potting shed was refurbished, the ground cleared and stakes for the trees were erected ready for the spring when we can look forward to moving ahead with our plans.

Other IDEA Projects

IDEA have other projects which not only bring income to the Centre but often fill a niche not met by other agencies

Medical Loan

IDEA work in partnership with the Red Cross to provide a medical loan service of wheelchairs and commodes on a temporary basis.

IDEA have a stock of their own wheelchairs and the Red Cross provided commodes (with the possibility of further equipment in the future)

Although IDEA do not gain financially from the loans, all the insurance costs are incurred by the Red Cross which enables us to provide this valuable service.



Accessible Transport

IDEA currently have 3 minibuses (2 of which are accessible) with which they provide transport in the community. They work in conjunction with the two Argyll and Bute Community Services vehicles to provide an Island wide service for local people who are unable to use existing public transport.

Running costs for the transport service are very high partly due to the rise in the cost of fuel. Some of these costs are however recouped by hiring out our services; IDEA have a contract with the local primary school, the leisure centre and buses can also be hired by local community groups and organisations.



The 'Spitting Pig' Spit Roast

This year, IDEAs gained funding from DIAGEO to buy a 'Spitting Pig' Spit Roasting Machine. The machine is able to roast large joints of meat which can then be carved and served.



The Spit Roaster in action

The machine made a big impression at every local event over the summer and proved to be very popular, with hundreds of meat rolls sold over those few events and hundreds of pounds raised for IDEAs (The meat cooked and sold over the summer was generously provided by Dunlossit Estates).

We hope to further utilise this facility next year by hiring it to local people and organisations and for catering functions.

Wheelie Boat and Picnic Site

IDEAs have our very own picnic site in a beautiful spot overlooking Dunlossit Loch. The site is great for summer barbeques and picnics and for those who would like to try their hand at a spot of fishing, IDEA have a Wheelie Boat, a small fishing boat designed to be accessible to both able-bodied people and wheelchair users.

The jetty and picnic site was built with the help from our friends from HMS Vanguard who have helped us with various projects over the years.

The Wheelie Boat is used in the summer months by our own members but is also available to hire by tourists and visitors to the Island through the Dunlossit Estate offices:





Main Objectives for coming year

Stability:

The main objective for IDEA in the coming year is to secure core funding for the Resource Centre.

Negotiations are underway with Argyll and Bute Council and we are all hopeful of a positive result. Having more stability will make us attractive to future employees, allowing us to increase the range of activities we provide and enable us fulfill our responsibilities to our membership.

Sustainability:

Our main objectives for working toward becoming a Social Enterprise this year are:

1. Separate individual projects from main budget: *Running some projects as social enterprises in their own right will remove the burden of responsibility from the Resource Centre.*
2. Create Social Accounting records: *Start the process of recording our non-financial assets*

Development:

Developing projects to their full potential. This will include:

- *Finding more suitable premises for shop*
- *Increase off peak use of Holiday House during season*
- *Push sales of Lottery and Buy.at/IDEA*
- *Increasing use of Spit Roast and outside catering*
- *Develop market garden projects*

Future Development

Social Enterprise.

IDEA's main focus of development is to become a Social Enterprise turning some of our various projects into income generators for the organisation. Projects are run as small enterprises and any profits made can be fed back into the Resource Centre and used to fund our various activities. This should eventually enable us to become self sufficient and reduce the need to apply for grant funding.

Instead of having 12 projects handled from the same source, having separate enterprises with their own accounts etc would give a more realistic overview of the financial turnover of IDEAs.

Staff Training

IDEA have an annual training schedule for staff who have the opportunity to identify training needs and attend any course which will enhance their working practices.

In accordance with Care Commission regulations, all staff must have an SVQ qualification to at least Level 2 by 2009. We currently have two members of our team qualified (one to Registered manager's Award, the other with Level 3). We are currently trying to access funding to be able to put three other staff members through this qualification and hope to have resolved the issue by the end of the year.



Financial Accountability**Bankers**

Bank of Scotland, Bowmore Branch

Shore St, Bowmore, Islay

Royal Bank of Scotland,

Bowmore Branch

Donald Caskie Square, Bowmore

Isle of Islay

Accountant

Jean McGilveray, Business services

Shore St, Bowmore, Islay

Independent Examiner—Auditor

Sally Anstee,

Ground Floor Office, Unit 30

Green End Gamlingay

Sandy, Beds

SG193LB

Available on Request:

- Reserves Policy
- Investment Policy
- Strategy and risk review.

Financial Statement (07/08 audited accounts expected July 2008)

Profit/Loss year ending 31 st March 2007	Unrestricted Funds £	Revenue Restricted Funds £	Total Funds 2007 £	Total Funds 2006 £
INCOMING RESOURCES				
Incoming Resources from generated funds				
<i>Voluntary Income</i>				
Grants	0		0	190,081
Donations and Memberships	20,297		20,297	10,629
<i>Activities for generating funds</i>				
Fundraising events	5,492		5,492	3,272
<i>Investment Income</i>				
Investment income	145		145	340
Incoming Resources from Charitable activities				
Grants/service level agreements	26,000	168,824	194,824	26,000
General Trading and rental income	75,748		75,748	47,151
Other income	0		0	
TOTAL INCOMING RESOURCES	127,682	168,824	295,506	277,473
RESOURCES EXPENDED				
<i>Cost of generating voluntary income</i>				
Fundraising costs	632		632	152
Charitable Activities				
<i>Cost of generating funds</i>				
Costs of goods and other costs	145,064	147,898	292,961	273,659
Governance costs	2,350		2,350	2,000
TOTAL RESOURCES EXPENDED	148,046	147,898	295,943	275,811
Net Movement in Funds	(20,364)	20,927	563	1,662
Total Funds at 1st March 2006	72,597	9,562	82,159	80,497
Total Funds at 31st March 2007	52,234	30,489	82,722	82,159

Accounts April 06—March 07.

Income and Expenditure—Projects Breakdown

Year ending 31 March 2007

2007		2006	
<u>RESOURCE CENTRE</u>			
Income	£	£	
	86,287.67	105,978.00	
Expenses		96,880.00	
Net Surplus	-5,868.19	9,098.00	
<u>HORTICULTURE</u>			
	£	£	
Income	17,899.15	501.00	
Expenditure	24,443.21	13,368.00	
Net Surplus	-6,544.06	-12,867.00	
<u>LUNCH CLUB</u>			
	£	£	
Income	11,196.00	19,196.00	
Expenditure	8,433.40	6,608.00	
Net Surplus	2,762.60	12,588.00	
<u>HOLIDAY HOUSE</u>			
	£	£	
Income	3,256.58	5,043.00	
Expenditure	4,745.62	2,149.00	
Net Surplus	-1,489.04	2,894.00	
<u>NERABUS PROJECT</u>			
	£	£	
Income	0.00	0.00	
Expenditure	0.00	0.00	
Net Surplus	0.00	0.00	
<u>RESTRICTED WAGES</u>			
	£	£	
Income	28,283.00	28,643.00	
Expenditure	23,786.22	25,574.00	
Net Surplus	4,496.78	3,069.00	
<u>SHOP</u>			
	£	£	
Income	8,012.28	8,116.00	
Expenditure	1,343.62	1,120.00	
Net Surplus	6,668.66	6,996.00	
	£	2007 £	2006 £
<u>TRANSPORT</u>			
	Total	Funded	Deficit
Income	57,748.22	77,909.51	-20,161.29
Expenditure	59,603.96	75,771.49	-16,167.53
Surplus/Deficit	-1,855.74	2,138.02	-3,993.76
<u>CONSOLIDATED ACCOUNTS</u>			
	2007 £	2006 £	
Income	296,506.00	278,440.00	
Expenditure	295,943.00	265,974.00	
Net Surplus	563.00	12,466.00	

The Accounts have been prepared in accordance with the special provision of Part VII of the Companies Act 1985 relating to small companies and in accordance with the Financial Reporting Standard for Smaller Entities (effective January 2007) . For a copy of the full Financial Statements please contact us at the address on back cover.

www.ideas.f9.co.uk



Creating Opportunities

Islay Disabled Endeavours and Action

Main Office:

Resource Centre

Kilarrow House

Isle of Islay

PA43 7LH

✉ office@ideas.f9.co.uk

☎ 01496 810 963

IDEA is Company Limited by Guarantee
with Charitable Status.

Charity No: SCO 22066

Company No: SC273380

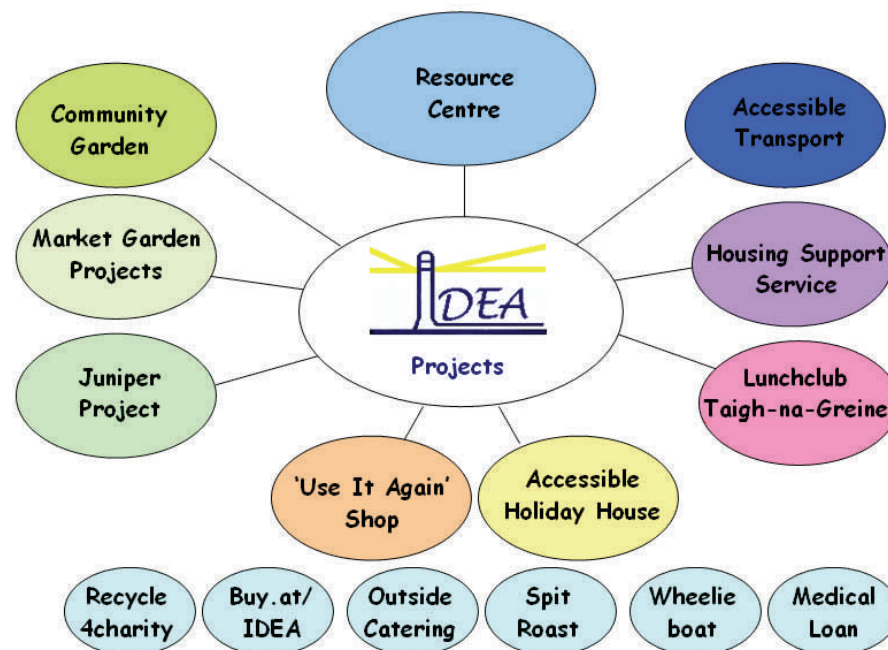
VAT No: 847865372

IDEA Aims & Objectives

IDEA aim to promote independence in people with all forms of disability by advancing training, education, employment prospects, social, recreational and leisure activities. Our trained staff offer appropriate support and we work closely with Local Authorities, Statutory and Voluntary organisations in a common effort to enhance quality of life, according to the individual needs of all people, their families and carers.

IDEAs work to promote general awareness of the Social problems which accompany disability in the wider community and have worked hard to establish their profile both locally and nationally.

Overview of IDEAs many projects



Acknowledgements

With grateful thanks to:

- * The Schroder Foundation and the Schroder family.
- * Dunlossit Estate and Trustees
- * DIAGEO
- * Lagavulin Fundraisers
- * MacTaggart 3rd Fund
- * Branston Ltd
- * Supporting People
- * The WHELK Foundation
- * West Highland Housing Association
- * Islay and Jura Social Services,
- * Local Councillors: Robin Currie, Ann Horn, and John MacCalpine.
- * Campbeltown Job Centre Plus
- * HMS Vanguard
- * The Red Cross
- * ReJig
- * Women's Rural Institute
- * Crossroads, Caring for Carers
- * Islay and Jura CVS
- * Royal Bank of Scotland
- * The local people of Islay and Jura.

