



英國工程監督學會 · 香港分會
INSTITUTE OF CLERKS OF WORKS OF GREAT BRITAIN INCORPORATED
HONG KONG BRANCH

NEWSLETTER



P.O. Box 20436, Hennessy Road, Hong Kong. Email: secretary@icwhkb.org

Web Site: <http://www.icwhkb.org>

JUNE 2004

AGM meeting for 2004/05

AGM meeting for 2004/05 was successfully held on 24/4/2004 and venue was on Hsin Kuang Restaurant. Council member for 2004/05 was appointed. Garry Ho again was elected as Chairman in this year and Steven Law also again to be Honorary Secretary. Unlike previous, we have two vice-chairman and some new joint council member in this year to handle our great amount of planning job in coming year.



The group photo of 04/05 council member



Chairman Garry Ho present the chairman report

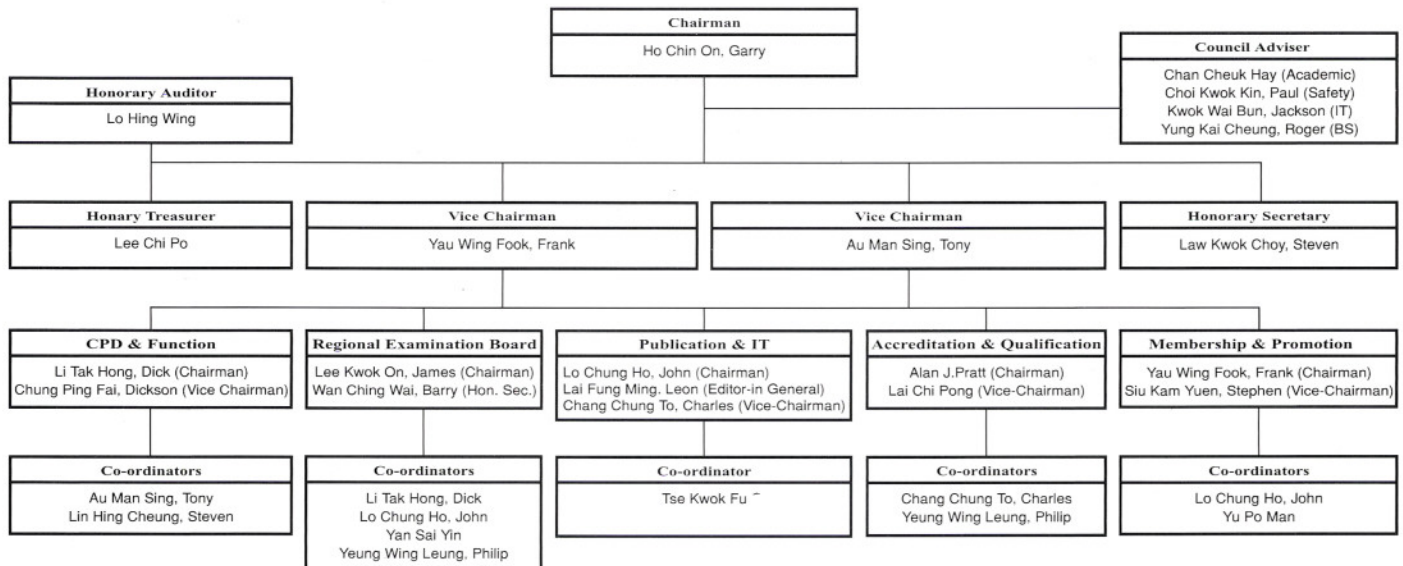


Mr. C.H. Chan council advisor deliver a talk of "Update of HK Education Reform"



Council Member and guest

Organization of ICW (HK Branch) Officers and Word Groups for the Session of 2004/2005



Message from Editor in General:

Dear Members,

At the recent, Hong Kong society full of request of freedom of speech. As the member of institute, you all have the right to express your opinion, either suggestion to institute, or to share your experience with us, or some idea, obsevation etc. You are welcome to send your article to us by e-mail or letter as convenience to you.

We will have 3 issues of newsletter in coming year include this one. I am assigned as editor in general in this year, I will try my best to search more information to publication.

If you have any comment or idea for this newsletter, just let us know.

Leon Lai Fung Ming
MICW

GENERAL KNOWLEDGE AND IMPORTANCE OF SAFETY HELMET AT CONSTRUCTION INDUSTRY

You will not be strange to a safety helmet if you are working at the construction industry. All of you may know that the main purposes of wear safety helmet are protect your skull hit on a hard object accidentally or hit by an object which fall from height.

According to the current Construction Site (Safety) Regulation, Reg.48, a contractor responsible for a construction site shall provide each workman employed on the site with a suitable safety helmet. Also, a contractor should take all reasonable steps to ensure that no workman remains on the site unless he is wearing a suitable safety helmet. The brand name, date of manufacturing and standard always internally mark on the safety helmet. The most important part of the safety helmet is not only the shell but also the harness.

The function of the harness, which constructed by cradle and headband, is used to maintain the helmet in position on the user's head and absorbing kinetic energy within the shell during an impact. It also keeps a 2.5-5.0cm distance between the user's head and the shell. Large distance will cause unstable for the helmet under wearing and small distance will minimize the protection for the user. A special design for the safety helmet is the nape strap and chin strap. They are adjustable and used to prevent the safety helmet fall from head. Actually, it is rare to use the chin strap in Hong Kong's construction site but you may see the application in china, Japan and South Korea.

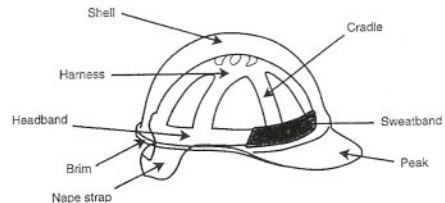


Plate 1: A general design of a safety helmet



Plate 2: Standard of safety helmet in various countries

A standard test was used a load of 5kg fall from 1m of height to act on the center of the shell and the total energy was 50J. Overload tests also had been conducted by use of total energy 100J and 150J with the same method. The result revealed that the best quality is ABS material. In Hong Kong, there are a lot of high-rise building projects. The current international standard of safety helmet to against impulsive force is not comprehensive for Hong Kong's construction industry. Also, the plastic materials of safety helmet will be degenerated under Hong Kong's hot and high humidity weather. Although the experiment result revealed that ABS material is the best material to against impulsive force, the quality of this material is the most easily be affected by the sunshine (UV) and humid climate. Therefore, a safety helmet is recommend to replace for every 24 months. It is suggested by no. 29, workplace notice, 1993, Health and Safety Executive (UK). Moreover, the "Guidance Notes on the Selection, Use and Maintenance of Safety Helmets" stated that safety helmet should be inspected for every 3 months to make sure the necessity of replacement.

As safety helmet is an important gear to protect our head in a construction site, the following items are suggested for properly use and maintenance:

- Do not use any damaged safety helmet at site.
- "Check before use" is required to ensure the safety helmet is in a good condition. Make sure the shell and the harness are in good connection.
- Proper adjustment is required to fit for the size of the head and let the safety helmet provide the maximum protection.
- Do not put solvent, paint or drill a hole on the helmet. These materials or action will reduce the strength of protection of the safety helmet.
- Chin strap should be used to maintain the stability of the safety helmet if you work under strong wind or bend waist downward.
- Do not wear grass hat or other hat under the safety helmet. Strength of protection and the stability of the safety helmet will be reduced if you do this.
- Do not use the safety helmet as a chair, step or container.
- Clean up the dirt, dust, sweat or soil, etc on the shell, harness and chin strap regularly.
- A safety helmet should be stored at a safe and clean position. No direct sunlight is preferred.
- A record system should be established to remind all the staff to replace the safety helmet for every 24 months.

Wear a safety helmet at a construction site is not only the responsibility of an employee but also a general duty of an employer. A cooperation of the employer and employee is the most effective way to promote the basic safety culture at a construction site.

Institute of Clerk of Works - Safety and Health Article Apr-2004
Paul Choi (Safety Advisor)

Reference:

1. *Construction Site (Safety) Regulation*
2. *Factories and Industrial Undertaking Ordinance, cap.59*
3. *Guidance Notes on the Selection, Use and Maintenance of Safety Helmets by Labour Department, 3/00*
4. *Hints on Personal Protective Equipment by Occupational Health and Safety Council, 6/99*
5. *Green Cross, 11/95, 7/97 and 9/99*

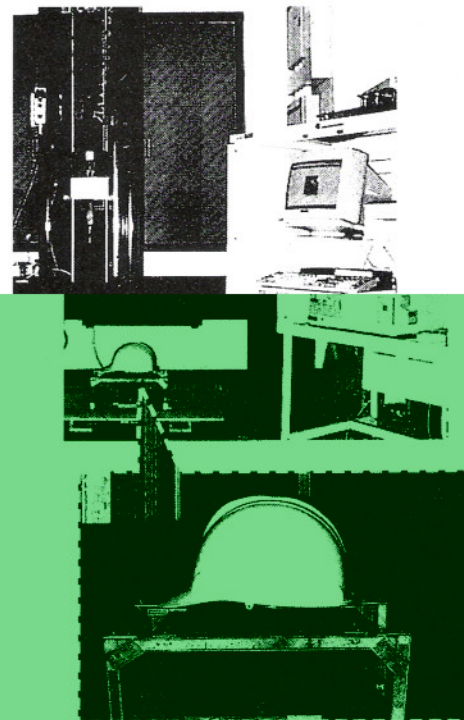


Plate 3: The set up of impulsive force experiment of the safety helmet

建造業前景

建造的失業情況,在近日開始持續昇高,我們試從現在市場上的情況去分析及了解問題所在。

一)施政報告中的基礎設施:

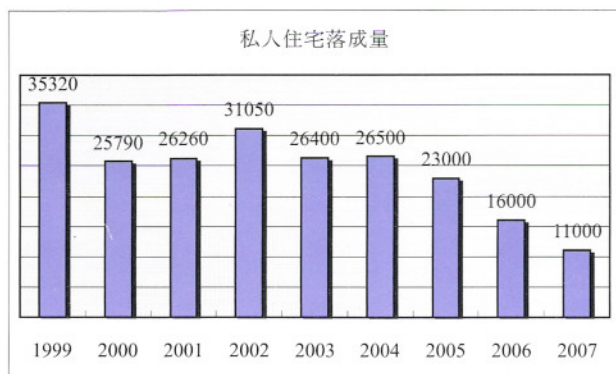
根據2001年報告,在2001年至2016年有共六千億的基建項目,其中有五千億,將會於2010年完成,其中包括四千億的政府基建項目及一千億的鐵路運輸項目。

這樣的分配,對建造業的影響有不良影響,於2010年後,至2016年的六年內,只有一千億的工程,平均為167億一年,相較2001年至2010年的五千億,平均有每年556億只得百分之三十,行業職位在2010年後亦會因而減少百分之三十。

而在2003年的施政報告中環境及工務局局長的發言,基建項目的投資額改為未來五年2003年-2008年間每年290億,而未有交代2001年起的十五年共六千億的實際完成情況及剩餘項目的數額,是政府不再有共六千億的基建投資額或是改為每年290億共只有五年的投資額呢,這對行業的前景令人無法估計。相關範疇的工程監督同業前景及建造業從業員,亦會受基建政策所影響。

二)房屋政策

根據房屋及規劃地政局資料,由1999年至2007年的每年私人住宅數量:



註:匯豐證券六月發表報告,評估在去年八月至今年四月新動工量為二萬二千個,會在06年落成,而07年的私樓供應量估計為二萬六千七百八十個其中估計標準是假設今年下半年新私樓動工量會因樓市氣氛好轉,因而比上半年增加,及估計鐵路沿線物業亦在今年下半年招標,同時加上樓宇空置5%及發展商擁有可發展的農地共25萬個。

從以上資料,表面上對樓市是一個正面的消息,私人樓宇的供應量,由1999年逐漸減少,至2007年,只有11000個私人住宅單位完成,對社會上的樓價,會因供應減少而估計會上升,令樓市升溫。

但是,在建築業的角度,這又會是另一個現象,看一看在這一兩年間,身邊的朋友,同事,有不少已經轉行,同時又經常受到朋友所托在尋找工作,有同行已經離開工程監督的行列。

停建居屋的政策,令居屋建造期所容納的約180位屋宇設備工程監督及一批工程監督,直接受到影響而部份已經轉業。

從身邊的例子,可見建築業的就業情況,這幾年實際地轉壞了。

政府於2002年停建居屋及停止賣地,在之前規劃及開工的地盤,大約三年至四年的建築期,相繼於2004年至2005年間完成,而2002年開始到現在2004年5月未有土地賣出,這將出現一個斷層。

再看一看上圖,根據差餉物業估價署資料及房屋及規劃地政局的資料,2004年的完成私樓量是26500個,2005年約23000個,受到停賣地的影響,在2007年,會降至只有11000個,比03-04年平均的少14500個等同41.5%。

而最近證券報告評估在去年八月至今年四月新動工私樓量有二萬二千個,該批單位將在2005年至2006年落成,樂觀看比政府估計的16000個為多,但停賣地的斷層亦將會在2004年尾至2005年間出現,同時間政府外判學校改善工程亦在2005年完工,這一批建築從業者包括該範疇的工程監督及屋宇設備工程監督將又會受到失業的威脅。

政府應該在考慮基建及房屋政策的同時,亦要兼顧土木工程及建築業的就業情況,並以較恒久及長遠的規劃,不致於一時人手不足,一時無工可做,亦應該正視私數建造從業者的未來一年嚴重的失業情況及有相應的措施去解決這部份業者包括我們同業的就業問題。

工程監督
黎馮明

Sport Day joint with CITA

21 March 2004 was an important day for our ICW incorporated. It is because our members, Dick Li and John Lo joined the sport day of CITA at Siu Sai Wan. For the happiest event Dick Li is the Champion in 1500m Long Run while John Lo is the Last - Placed in Long Jump.

Although there is not too much participant, we haven't brought a disappointed to our supporters.

The sport day will be held next year. Hope to see you there and let us be the brightly committee in this event.

Professional Practice & Welfare Committee

Dick Li



Dick Li The Champion in 1500m Long Run



How smart of our Chairman in Welfare



Cheers before competition



The champion, I am coming...



Yeah!!!





In summer 2004, over 4,000 graduates and 4,900 non-final-year students from a wide spectrum of courses will be available respectively for graduate employment and summer jobs during late May to late August.

If your company has suitable vacancies for our students, you can post your advertisement on-line at the Joint Institution Job Information System at <http://www.jijis.org.hk>. For further information, you are most welcome to contact our staff members.

Staff	Title	Telephone	Email Address
Jack Kwan	Counselling Specialist (Personal and Career Development)	2766-6803	sajack@inet.polyu.edu.hk
Sue Wong (Miss)	Executive Officer	2766-6793	saswong@inet.polyu.edu.hk

Student Affairs Office
The Hong Kong Polytechnic University
Hunghom, Kowloon
Phone: (852) 2766-6800
Fax : (852) 2774-5226
Email: sacareer@inet.polyu.edu.hk

INSTITUTE OF CLERKS OF WORKS OF G. B. INC., HONG KONG BRANCH
I.C.W. T-SHIRT EXCLUSIVE AVAILABLE FOR LOCAL MEMBERS

The more people acknowledge I.C.W. the more beneficial to the Institute and the Hong Kong Branch as well as our members like you. Hence you are playing an active part in booming the statue of the Institute in every occasion.



Every time when you wear a T-shirt carrying the Institute Crest you will draw the attention of the people from the construction field and the public as a whole.

Now, a fine collection of distinctive T-shirt incorporating The Institute Logotype in subtle design is available for members in two colors - White and Black. This article is of high quality, which will superbly symbolize your membership with the Institute

Please complete the order form below for easy handling of your request. T-shirt with plastic wrapping will be dispatched by registered post. (Please allow 4 - 6 weeks for processing your order).

Please tear here -----

----->

I.C.W. T-SHIRT ORDER FORM

To: Chairman, Public Relations Committee Institute of Clerks of Works of G. B. Inc., Hong Kong Branch
P. O. Box 20436, Hennessy Road, Hong Kong

Please send me the following T-shirt(s): -

Colour	White		Black	
	M	No.	M	No.
Number Required	X	No.	X	No.
	XL	No.	XL	No.

I enclosed a cheque/Cashier Order No: _____ for HKS _____ being the cost of T-shirt @ HK\$120.00 per shirt inclusive of registered postage and packing (Cheque should be crossed in favour of "The Institute of Clerks of Works of Great Britain Incorporated Overseas Group (HK Branch)).

Name: _____ Grade: _____

Address: _____

Mobile Phone: _____ Office: _____ Fax: _____

Signature: _____ Date: _____

Note: Please mark 'T-shirt ORDER' on the envelope for fast processing your order.